

aufgabe_1.6.3_mit_rechnung

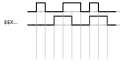
Student Group

First Name	Surname	Matrikel Nr.

Table of Contents

Step-by-step solution for X_0 ; XOR ; X_1

1. Interpretation of the timing diagram:
 \quad



The time course of X_0 and X_1 can be interpreted as 0 's and 1 's

1. Interpretation of the timing diagram:
 \quad



2. Sometimes an intermediate step is advantageous:
\$\quad\$

Here, this could be $\frac{1}{X}$.

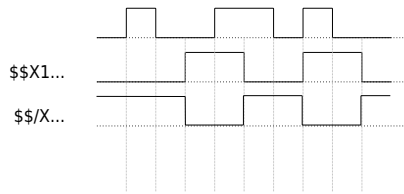
3. Next we have to find the result for each column:
 \quad

3. Next we have to find the result for each column:
\$\quad\$

This result can be reused for time steps with similar inputs.

3. Next we have to find the result for each column:
\$\quad\$

4. Applying this for all possible inputs:
\$\quad\$



From:
<https://mexle.te.hs-heilbronn.de/> - MEXLE Wiki

Permanent link:
https://mexle.te.hs-heilbronn.de/introduction_to_digital_systems/aufgabe_1.6.3_mit_rechnung?rev=1666186802

Last update: **2022/10/19 15:40**

