

aufgabe_1.6.3_mit_rechnung

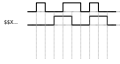
Student Group

| First Name | Surname | Matrikel Nr. |
|------------|---------|--------------|
| | | |
| | | |
| | | |

Table of Contents

Step-by-step solution for X_0 ; XOR ; X_1

1. Interpretation of the timing diagram:
 \quad



The time course of X_0 and X_1 can be interpreted as 0 's and 1 's

1. Interpretation of the timing diagram:
 \quad



2. Goal is to find the result for each column:
\$\quad\$

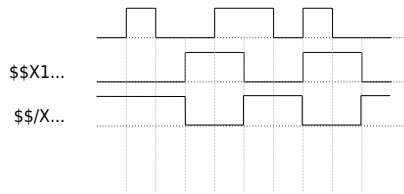
3. Sometimes an intermediate step is advantageous:
\$\quad\$

4. Now we have to calculate each step:
\$\quad\$

In theory, this can be done for every time step. However, for more complex formulas it is easier to

10. Goal is to find the result for each column:

\quad



From: <https://mexle.te.hs-heilbronn.de/> - MEXLE Wiki

Permanent link: https://mexle.te.hs-heilbronn.de/introduction_to_digital_systems/aufgabe_1.6.3_mit_rechnung?rev=1666185677

Last update: 2022/10/19 15:21

