

# Exam Summer Semester 2024

## Student Group

First Name	Surname	Matrikel Nr.

## Table of Contents

**Exam Summer Semester 2024** ..... 2

    Additional permitted Aids ..... 2

    Hits ..... 2

    Tasks ..... 2

        Exercise E2 Electrostatics I (written test, approx. 8 % of a 120-minute written test, SS2024) ..... 2

        Exercise E1 Electrostatics II (written test, approx. 10 % of a 120-minute written test, SS2024) ..... 4

        Exercise E1 Capacitor (written test, approx. 12 % of a 120-minute written test, SS2024) ..... 5

        Exercise E1 Magnetic Field Lines (written test, approx. 6 % of a 120-minute written test, SS2024) ..... 6

        Exercise E6 Fields of an coax Cable (written test, approx. 12 % of a 120-minute written test, SS2024) ..... 7

        Exercise E8 Lorentz Force (written test, approx. 8 % of a 120-minute written test, SS2024) ..... 9

        Exercise E10 Magnetic Potential (written test, approx. 8 % of a 120-minute written test, SS2024) ..... 10

        Exercise E12 Self-Induction (written test, approx. 8 % of a 120-minute written test, SS2024) ..... 11

        Exercise E14 Magnetic Circuit (written test, approx. 9 % of a 120-minute written test, SS2024) ..... 11

        Exercise E16 Magnetic Circuit (written test, approx. 10 % of a 120-minute written test, SS2024) ..... 13

        Exercise E18 Magnetic Circuit (written test, approx. 10 % of a 120-minute written test, SS2024) ..... 15

# Exam Summer Semester 2024

## Additional permitted Aids

- non-programmable calculator,
- formulary (4 one-sided DIN A4 pages)

## Hits

- The duration of the exam is 120 min.
- Attempts to cheat will lead to exclusion and failure of the exam.
- Withdrawal is no longer possible after these exam has been handed out.
- Please write down intermediate calculations and results on the assignment sheet. (when more space is needed also on the reverse side. In this case: Mark it clearly).
- Always use units in the calculation.
- Use a document-proof, non-red pen.

## Tasks

### Exercise E2 Electrostatics I

(written test, approx. 8 % of a 120-minute written test, SS2024)

Given is the arrangement of the charges as in the picture below. The values of the point charges are  $q_1 = 1 \text{ nC}$ ,  $q_2 = 1 \text{ nC}$ ,  $q_3 = 1 \text{ nC}$ ,  $q_4 = 1 \text{ nC}$ ,  $q_5 = 1 \text{ nC}$ . Which value needs  $E_4$  to have to get a resulting force of  $0 \text{ N}$  on  $q_0$ ?

Path:  $q_0 = -1 \text{ nC}$

- $q_1 = -5 \text{ nC}$

Path:  $E_4 = 2500 \text{ V/m}$

$$\vec{F}_{01} = \left( \begin{array}{c} +917 \\ \sim \mu \text{N} \end{array} \right) \parallel 0$$

In the beginning the are 5 force components, we can not calculate the resulting magnitude of the force.

$$|\vec{F}_{01}| = \sqrt{\left( \sum_i F_{i,x} \right)^2 + \left( \sum_i F_{i,y} \right)^2} = 1.897 \cdot 10^{-9} \text{ N}$$

$$|\vec{F}_{01}| = |E_4| \cdot |q_0| \implies E_4 = \frac{|\vec{F}_{01}|}{|q_0|} = \frac{1.897 \cdot 10^{-9} \text{ N}}{1 \cdot 10^{-9} \text{ C}} = 1.897 \text{ V/m}$$

$$E_4 = 1.897 \text{ V/m} \approx 1.9 \text{ V/m}$$

$$E_4 = 1.897 \text{ V/m} \approx 1.9 \text{ V/m}$$

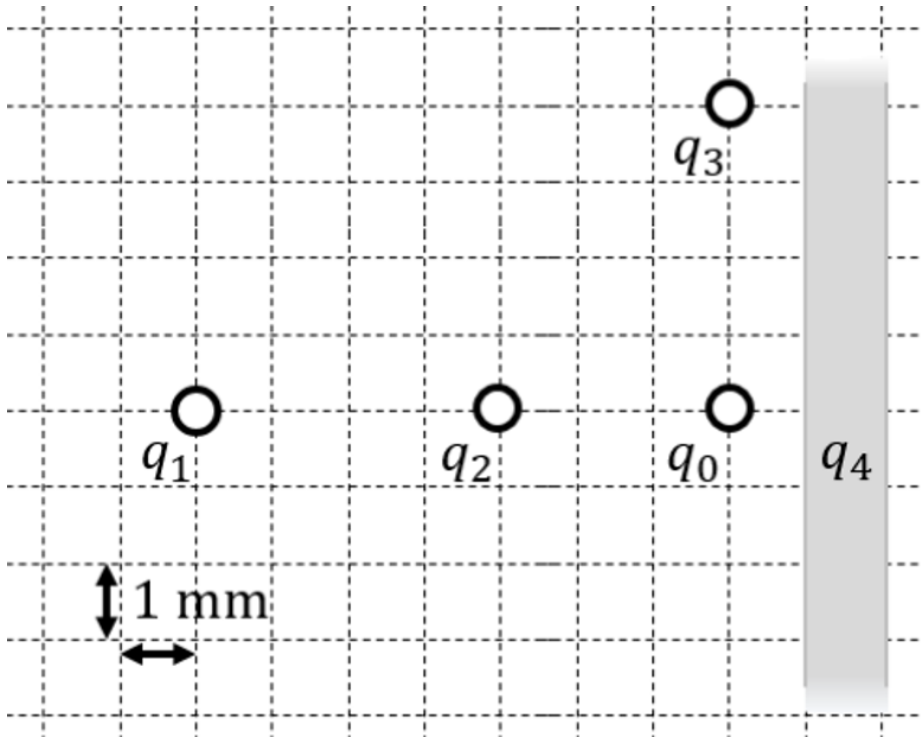
$$E_4 = 1.897 \text{ V/m} \approx 1.9 \text{ V/m}$$

$$E_4 = 1.897 \text{ V/m} \approx 1.9 \text{ V/m}$$

$$E_4 = 1.897 \text{ V/m} \approx 1.9 \text{ V/m}$$

$$E_4 = 1.897 \text{ V/m} \approx 1.9 \text{ V/m}$$

$$E_4 = 1.897 \text{ V/m} \approx 1.9 \text{ V/m}$$



1. Calculate the single forces  $\vec{F}_{01}$ ,  $\vec{F}_{02}$ ,  $\vec{F}_{03}$ , on the charge  $q_0$ !

Path

First, set up a coordinate system. Here, I choose  $x$  pointing to the right (positive values to the right) and  $y$  pointing upwards (positive values upwards).

Then, calculate the magnitude of the forces, like  $\vec{F}_{01}$  (force on  $q_0$  from  $q_1$ ).

The force  $\vec{F}_{01}$  is purely on the  $x$ -axis and therefore equal to  $F_{01,x}$ .

$$\begin{aligned} \vec{F}_{01} &= F_{01,x} \hat{x} = \\ & \frac{1}{4\pi\epsilon_0} \cdot \frac{q_1 q_0}{r_{01}^2} \hat{x} = \\ & \frac{1}{4\pi \cdot 8.854 \cdot 10^{-12} \text{ As/Vm}} \cdot \frac{1 \cdot 10^{-9} \text{ C} \cdot 5 \cdot 10^{-9} \text{ C}}{(7 \cdot 10^{-3} \text{ m})^2} \hat{x} = \\ & 917. \dots \cdot 10^{-6} \frac{\text{As}^2 \cdot \text{Vm}}{\text{As} \cdot \text{m}^2} = \\ & 917. \dots \cdot 10^{-6} \frac{\text{VA}}{\text{m}} = 917. \dots \cdot 10^{-6} \text{ \mu N} \end{aligned}$$

Since both  $q_0$  and  $q_1$  have the same sign for their charges, they are repelling each other. Therefore, The force  $\vec{F}_{01}$  points to the right (positive value).

Similarly, we get for  $\vec{F}_{02}$  and  $\vec{F}_{03}$

$$\begin{aligned} \vec{F}_{02} &= F_{02,x} \hat{x} = -1123. \dots \text{ \mu N} \\ \vec{F}_{03} &= F_{03,y} \hat{y} = -1123. \dots \text{ \mu N} \end{aligned}$$

Since  $q_0$  and  $q_2$  have the different sign for their charges, they are attract each other. Therefore, The force  $\vec{F}_{02}$  points to the left (negative value).

Since  $q_0$  and  $q_3$  have the different sign for their charges, they are attract each other. Therefore, The force  $\vec{F}_{03}$  points downwards (negative value).



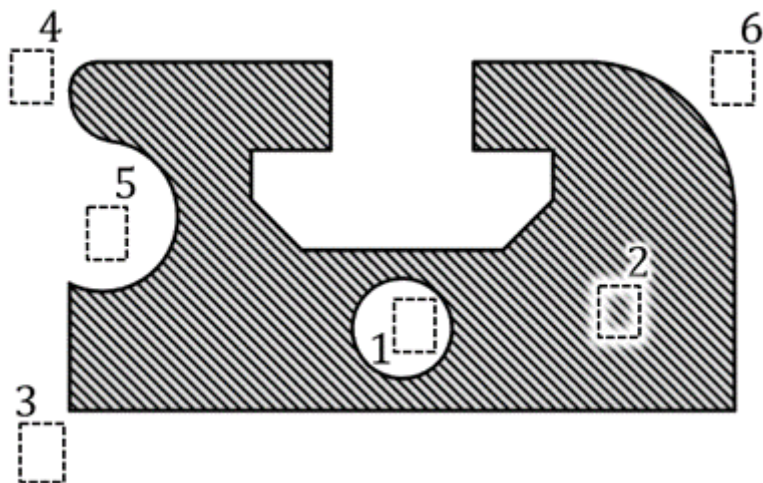
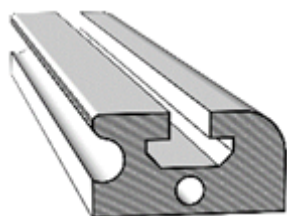
electrical\_engineering\_and\_electronics:task\_5u1zbroaz75w39jk\_with\_calculation  
electrostatic, field lines, exam ee2 ss2024

**Exercise E1 Electrostatics II**  
**(written test, approx. 10 % of a 120-minute written test, SS2024)**

You must analyze an aluminum profile for usage in an environment critical for electrostatic discharge.

The figure on the right shows the cross-section of the aluminum element (hatched). During the application, it might get charged up. All areas in white consist of air (= dielectric).

Six designated areas are shown by dashed frames and numbers n, which are partly inside the object.



Arrange the designated areas clearly according to ascending field strengths  $|\vec{E}_n|$  (absolute magnitude)! Indicate also, if designated areas have quantitatively the same field strength.

Result

$$|E_1|=|E_2|=0 < |E_5| < |E_6| < |E_4| < |E_3|$$

electrical\_engineering\_and\_electronics:task\_ci1z102x25jmpzvs\_with\_calculation  
electrostatic, electric field strength, exam ee2 ss2024

**Exercise E1 Capacitor**

(written test, approx. 12 % of a 120-minute written test, SS2024)

0.1 Calculate the capacity of a series combination of two parallel plate capacitors with the following parameters. The distance between the plates is  $d = 200 \mu\text{m}$ . The area of the plates is  $A = 25 \text{ mm}^2$ . The dielectric constant of the air is  $\epsilon_{\text{air}} = 1$  and the dielectric constant of the contaminant is  $\epsilon_{\text{c}} = 8.854 \cdot 10^{-12} \text{ F/m}$ . The supply voltage is  $U = 3.3 \text{ V}$ . The result is approx.  $C = 1.1 \text{ pF}$ .

The contaminant has  $\epsilon_{\text{r,c}} > \epsilon_{\text{r,air}}$ , while the distance between the plates remains the same. Give a generalized formula

Path

$$C_2 = f(A, d, x, \epsilon_{\text{r,c}}, \epsilon_{\text{r,air}})$$

$$Q = \frac{U \cdot \epsilon_0 \cdot \epsilon_{\text{r,c}} \cdot A}{d} \cdot \epsilon_{\text{r,c}} \cdot \frac{1}{\epsilon_{\text{r,c}} \cdot d + x \cdot \epsilon_{\text{r,air}}}$$

There are two ways now. Either:  $Q = C \cdot U = 1.1 \text{ pF} \cdot 3.3 \text{ V} = 3.6522 \dots \text{ pC}$  Or:  $Q = D \cdot A = 146 \text{ nC/m}^2 \cdot 25 \text{ mm}^2 = 3.65 \text{ pC}$

The displacement field is given by:  $D = \epsilon_0 \cdot \epsilon_{\text{r,c}} \cdot E$  and  $E = \frac{U}{d}$

The resulting capacity  $C$  is now  $C = \frac{Q}{U} = \frac{\epsilon_0 \cdot \epsilon_{\text{r,c}} \cdot A \cdot U}{d \cdot U} = \epsilon_0 \cdot \epsilon_{\text{r,c}} \cdot \frac{A}{d}$

Therefore:  $C = \frac{1}{\frac{1}{C_{\text{air}}} + \frac{1}{C_{\text{c}}}}$

With  $C_{\text{air}} = \epsilon_0 \cdot \epsilon_{\text{r,air}} \cdot \frac{A}{d}$  and  $C_{\text{c}} = \epsilon_0 \cdot \epsilon_{\text{r,c}} \cdot \frac{A}{x}$

$$C_{\text{air}} = \epsilon_0 \cdot \epsilon_{\text{r,air}} \cdot \frac{A}{d} \quad C_{\text{c}} = \epsilon_0 \cdot \epsilon_{\text{r,c}} \cdot \frac{A}{x}$$

- in the following such a sensor is given with:
- This leads to:  $C = \epsilon_0 \cdot A \cdot \left( \frac{1}{d \cdot \epsilon_{\text{r,air}}} + \frac{1}{x \cdot \epsilon_{\text{r,c}}} \right)$
- Plate area:  $A = 25 \text{ mm}^2$
  - Distance between both plates:  $d = 200 \mu\text{m}$
  - Air between the plates:  $\epsilon_{\text{r,air}} = 1$
  - Supply voltage:  $3.3 \text{ V}$
  - Boundary effects on the end of the layers shall be ignored in the following calculations.

$\epsilon_0 = 8.854 \cdot 10^{-12} \text{ F/m}$

1. Calculate the capacity  $C$ .

Path

$$C = \epsilon_0 \cdot \epsilon_{\text{r,c}} \cdot \frac{A}{x} \quad \epsilon_{\text{r,c}} = 8.854 \cdot 10^{-12} \text{ F/m}$$

$$C = 8.854 \cdot 10^{-12} \text{ F/m} \cdot 1 \cdot \frac{25 \cdot 10^{-6} \text{ m}^2}{200 \cdot 10^{-6} \text{ m}}$$

electrostatic, capacitor, plate capacitor, capacity, exam ee2 ss2024

**Exercise E1 Magnetic Field Lines**  
**(written test, approx. 6 % of a 120-minute written test, SS2024)**

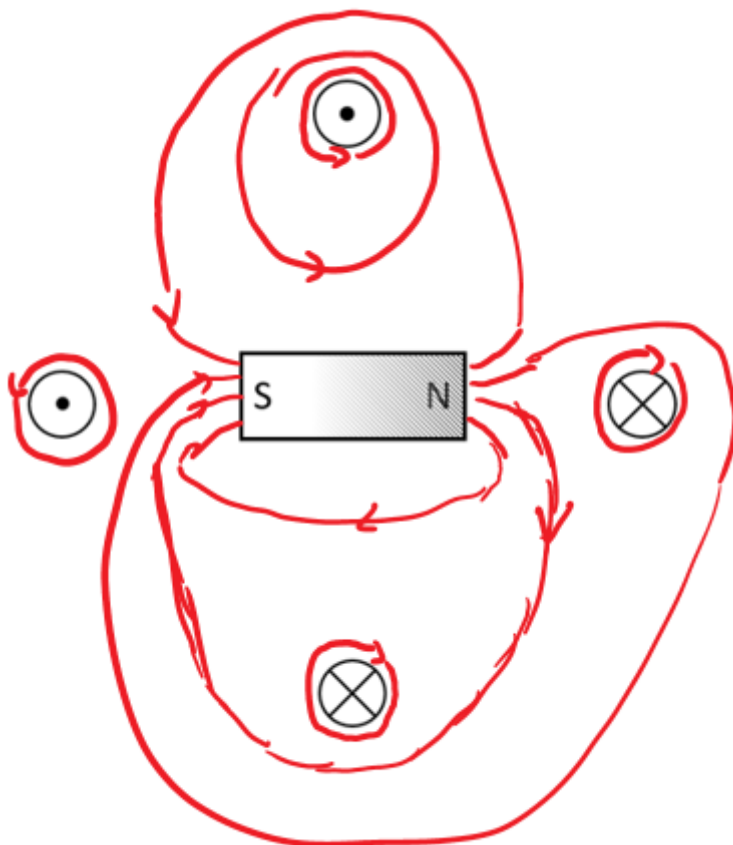
The following setup of a permanent magnet affects the H-field, based on the fundamental definition of the H-field.

- Four conductors are located perpendicular to the plane of the diagram

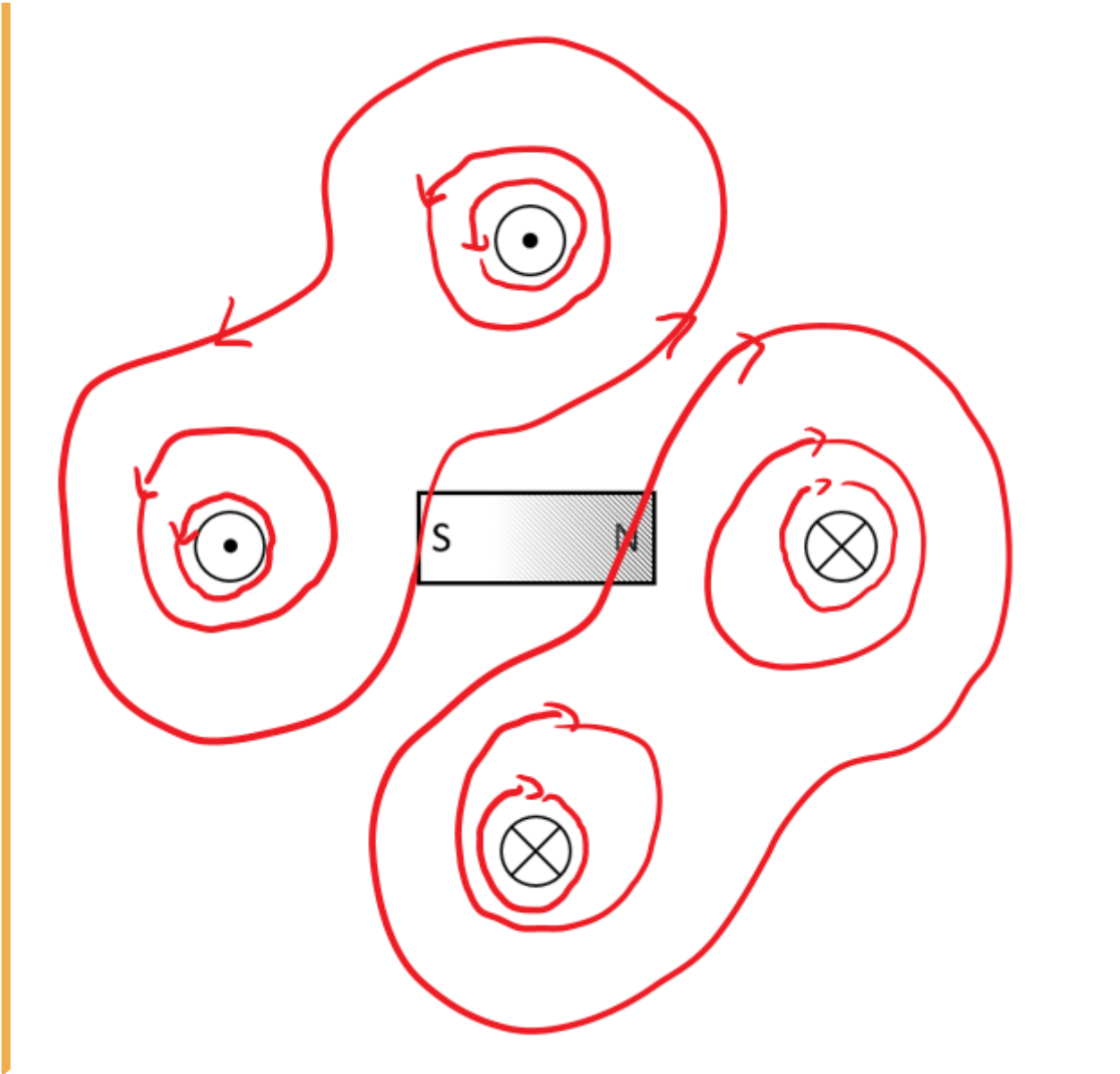
Result: All of them conduct a current with the same magnitude, but not in the same direction.

- A permanent magnet is located in between the conductors.

- The H-field is defined by currents  $\oint \mathbf{H} \cdot d\mathbf{s} = \sum I$ .
- In the permanent magnet, there are no free currents.
- The bound currents (of the permanent magnet) create also an H field.
- This exits on the north pole and enters the magnet on the south pole (similar to the B-field)
- $\mathbf{H} = \mathbf{B} / \mu_0$
- The H-field from task 1 gets distracted



st 10 field lines of the H-field  
 and density for the shown



electrical\_engineering\_and\_electronics:task\_8a117vmnbbmsbfz3\_with\_calculation  
 magnetostatic, magnetic field lines, exam ee2 ss2024

**Exercise E6 Fields of an coax Cable**  
 (written test, approx. 12 % of a 120-minute written test, SS2024)

2. For the graph of the development of the magnetic field lines  $B$  in the diagram (0.6 shows the result for  $r = 0.55 \text{ mm}$ )  $B$  is shown with the origin  $(0,0)$  in the center of the diagram. Describe the intensity and label for the diagram appears:

- Inner conductor:  $+3.3 \text{ mA}$ ,  $+10 \text{ nC}$  (current into the plane of the path diagram)
  - Outer conductor:  $-3.3 \text{ mA}$ ,  $0 \text{ nC}$  (current out of the plane of diagram)
  - for  $(0.1 \text{ mm} | 0)$ :  $B_{\text{in}} = 328 \dots \text{ A/m}^2$
  - for  $(0.55 \text{ mm} | 0)$ :  $B_{\text{out}} = 6.985 \dots \text{ A/m}^2$
- The magnitude of the electric displacement field  $D$  can be calculated by:  $\int D \cdot dA = Q$ .
- In general, the  $B$ -field is proportional to  $\frac{1}{r}$  for the situation here, for any position radial to the center, the surrounding area is the surface of a
- between both conductors.

cylinder shape. Wires are uniformly distributed in the conductor. The magnetic field is not homogeneous within the conductor. The magnetic field strength  $H$  is proportional to the area within this radius. Therefore, the formula  $H = \frac{I}{2 \pi r}$  gets  $H(x) = \frac{I}{2 \pi r}$ . So, we get for  $H_{\text{in}}$  at  $r_{\text{in}} = 0.1 \text{ mm}$  and  $H_{\text{out}}$  at  $r_{\text{out}} = 0.55 \text{ mm}$ . For  $x$  within the outer conductor one also gets a linear proportionality with a similar approach.

$$\begin{aligned} H_{\text{in}} &= \frac{I}{2 \pi r_{\text{in}}} = \frac{10 \cdot 10^{-9} \text{ C}}{2 \pi \cdot 0.1 \cdot 10^{-3} \text{ m}} = 1.59 \cdot 10^{-9} \text{ A/m} \\ H_{\text{out}} &= \frac{I}{2 \pi r_{\text{out}}} = \frac{10 \cdot 10^{-9} \text{ C}}{2 \pi \cdot 0.55 \cdot 10^{-3} \text{ m}} = 2.9 \cdot 10^{-10} \text{ A/m} \end{aligned}$$

Hint: For the direction, one has to consider the sign of the enclosed charge. By this, we see that the  $D$ -field is positive. But here, again only the magnitude was questioned!

.. What is the magnitude of the magnetic field strength  $H$  at  $r_{\text{in}} (0.1 \text{ mm} | 0)$  and  $r_{\text{out}} (0.55 \text{ mm} | 0)$ ?

Path

The magnitude of the magnetic field strength  $H$  can be calculated by:  $H = \frac{I}{2 \pi r}$ . So, we get for  $H_{\text{in}}$  at  $r_{\text{in}} (0.1 \text{ mm} | 0)$ , and  $H_{\text{out}}$  at  $r_{\text{out}} (0.55 \text{ mm} | 0)$ :

$$\begin{aligned} H_{\text{in}} &= \frac{I}{2 \pi r_{\text{in}}} = \frac{+3.3 \text{ A}}{2 \pi \cdot 0.1 \cdot 10^{-3} \text{ m}} \\ H_{\text{out}} &= \frac{I}{2 \pi r_{\text{out}}} = \frac{+3.3 \text{ A}}{2 \pi \cdot 0.55 \cdot 10^{-3} \text{ m}} \end{aligned}$$

Hint: For the direction, one has to consider the right-hand rule. By this, we see that the  $H$ -field on the right side points downwards. Therefore, the sign of the  $H$ -field is negative. But here, only the magnitude was questioned!

**Exercise E8 Lorentz Force**

**(written test, approx. 8 % of a 120-minute written test, SS2024)**

2. Describe the system for the lift and shuttle coils for the homogeneous constant field of the fixed floor, resulting force vector to the image for each side of the shuttle (see image).

Result

Path

Since the result of  $\vec{F} = I \vec{L} \times \vec{B}$  has to be perpendicular to  $\vec{B}$ -field and conductor, the force has to point to the left or the right.

For a homogeneous  $\vec{B}$ -field ("constant magnetic field of the shuttle"), the Lorentz forces cancel each other out.

The Lorentz force can only have a lifting effect in an inhomogeneous field.

In this case, the sum of the forces results in a repulsing force, see image.

Beside boundary effects, The field gets also inhomogeneous, by the additional field of the coils.

the coils.

Fixed Floor

- current  $I = 1.6 \text{ A}$
- magnetic field of the shuttle of is homogeneous with  $B = 0.5 \text{ T}$

1. Calculate the magnitude of the resulting force on one coil!

Path

The Lorentz force on a conductor the length  $l$  and the current  $I$  in a  $B$ -field is

$$|\vec{F}_L| = I \cdot l \cdot B \cdot \cos(\angle \vec{B}, \vec{l})$$

$$= I \cdot (N \cdot 2\pi r) \cdot B \cdot \cos(\angle \vec{B}, \vec{l})$$

$$= 1.6 \text{ A} \cdot (500 \cdot 2\pi \cdot 40 \cdot 10^{-3} \text{ m}) \cdot 0.5 \text{ T} \cdot \cos 90^\circ$$

electrical\_engineering\_and\_electronics:task\_5efsj705cf97jxga\_with\_calculation  
 lorentz force, magnetic field, exam ee2 ss2024

### Exercise E10 Magnetic Potential

(written test, approx. 8 % of a 120-minute written test, SS2024)

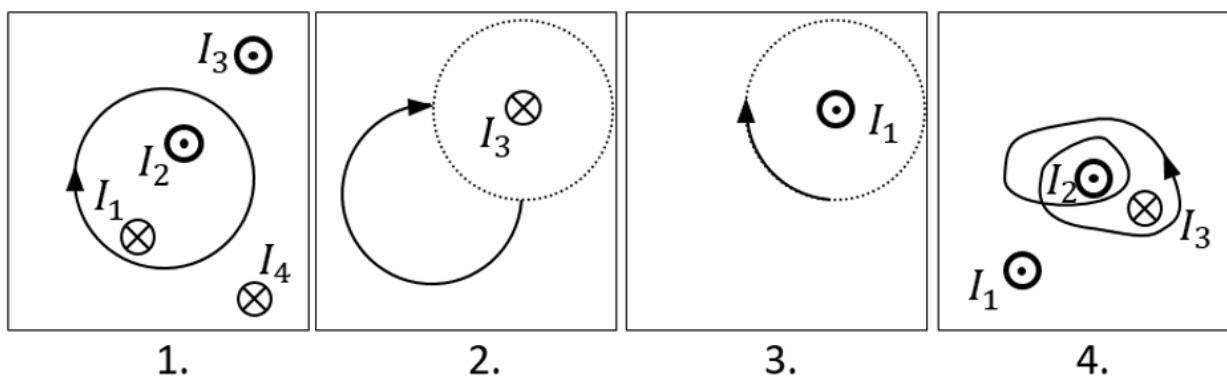
Calculate the magnetic potential difference  $V_{\text{m}}$  for the following paths as shown by the solid lines.

Dotted lines are only for there for symmetry aspects!

The wires conduct the following currents:

- $|I_1| = 2 \text{ A}$
- $|I_2| = 5 \text{ A}$
- $|I_3| = 11 \text{ A}$
- $|I_4| = 7 \text{ A}$

Pay attention to the signs of the currents (given by the diagrams) and of the results!



Result

Based on the right-hand rule and the part of a full revolution the following results:

1. Task:  $+I_1 - I_2 = -3 \text{ A}$
2. Task:  $+\frac{1}{4} I_3 = \frac{11}{4} \text{ A}$  (it does not matter which way the path goes from the startpoint to the endpoint, as long as it has the same direction and number of revolutions)
3. Task:  $-\frac{1}{4} I_1 = -0.5 \text{ A}$
4. Task:  $+2 \cdot I_2 - 1 \cdot I_3 = -1 \text{ A}$

electrical\_engineering\_and\_electronics:task\_kmp8r8y6lvwjnoc3\_with\_calculation  
magnetic potential, exam ee2 ss2024

### Exercise E12 Self-Induction

(written test, approx. 8 % of a 120-minute written test, SS2024)

2. Determine the length of a 30-volt generator coil with a radius of 12 cm and 500 turns.  
Result: Current through the coil changes linearly from 0 A to 3 A in 0.02 ms.  
The arrangement is located in air ( $\mu_r=1$ ).  
Path

$\mu_0 = 4\pi \cdot 10^{-7} \text{ Vs/Am}$
$u_{\text{ind}} = -L \cdot \frac{\Delta i}{\Delta t} = -1.32 \cdot 10^{-3} \text{ V}$
.. Calculate the (self-)inductance of the coil. For the linear change of the current the formula of the induced voltage can also be linearized: $u_{\text{ind}} = -L \cdot \frac{\Delta i}{\Delta t} = -1.32 \cdot 10^{-3} \text{ V}$
The formula for the induction of a long coil is: $L = \mu_0 \mu_r \cdot N^2 \cdot \frac{A}{l} = 4\pi \cdot 10^{-7} \text{ Vs/Am} \cdot (500)^2 \cdot \frac{\pi \cdot (2 \cdot 10^{-2} \text{ m})^2}{2 \cdot 10^{-2} \text{ m}}$

electrical\_engineering\_and\_electronics:task\_ljxf80q7vxywehqf\_with\_calculation  
induction, exam ee2 ss2024

### Exercise E14 Magnetic Circuit

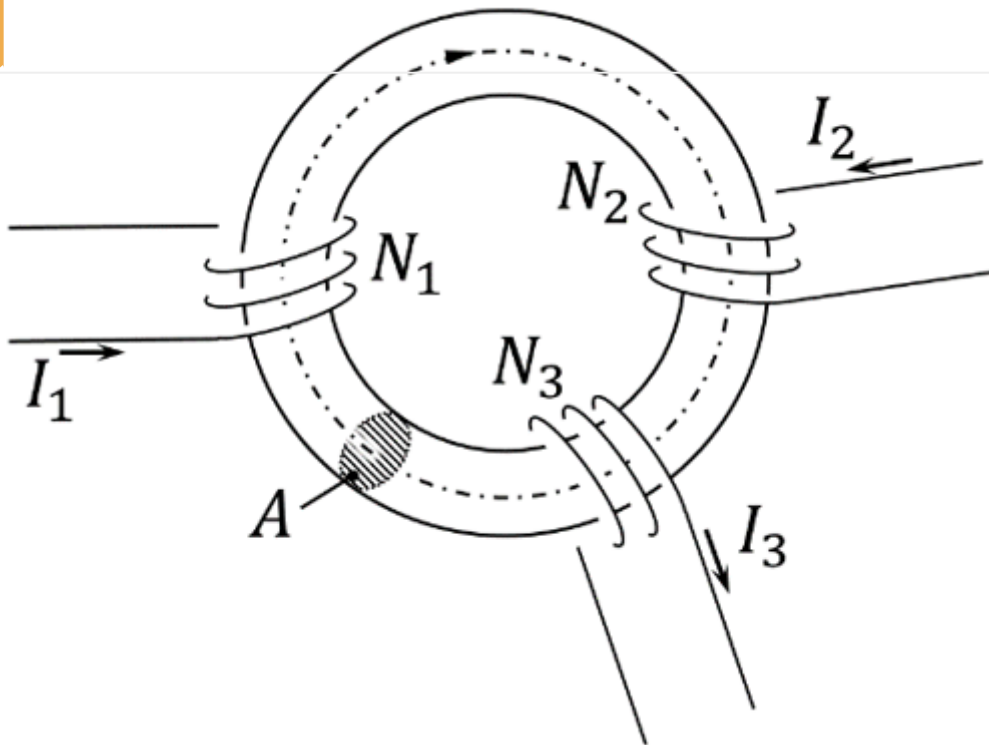
(written test, approx. 9 % of a 120-minute written test, SS2024)

2. Calculate the magnetic field strength  $H$  in a core with a cross-sectional area of  $A=300 \text{ mm}^2$  and an average circumference of  $l=3 \text{ dm}$ .

Path

$R_{\text{m}} = \frac{l}{\mu_0 \mu_r A} = 0.884 \cdot 10^6 \text{ 1/H}$
First we have to calculate the magnetic resistance $R_m$ based on the sources: $R_m = \frac{l}{\mu_0 \mu_r A} = \frac{3 \text{ m}}{4\pi \cdot 10^{-7} \text{ Vs/Am} \cdot 300 \cdot 10^{-6} \text{ m}^2} = 3.884 \cdot 10^6 \text{ 1/H}$ To get the flux $\Phi$ , the Hopkinson's Law can be applied - similar to the Ohm's Law: $\Phi = \frac{I}{R_m} = \frac{60 \text{ A}}{0.884 \cdot 10^6 \text{ 1/H}} = 67.8 \cdot 10^{-6} \text{ Wb}$

$$A \cdot H = 67.8 \dots \text{~\rm \mu Vs} \quad l, \Phi = 67.8 \dots \text{~\rm \mu Vs}$$



On the core, there are three coils with:

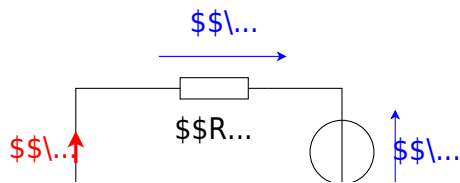
- Coil 1:  $N_1 = 1200$ ,  $I_1 = 100 \text{ ~\rm mA}$
- Coil 2:  $N_2 = 33$ ,  $I_2 = 3 \text{ ~\rm A}$
- Coil 3:  $N_3 = 270$ ,  $I_3 = 0.3 \text{ ~\rm A}$

Refer to the drawing for the direction of the windings, current, and flux!

1. Draw the equivalent magnetic circuit that fully represents the setup. Name all the necessary magnetic resistances, fluxes, and voltages.

Result

- Since the material, and diameter of the core is constant, one can directly simplify the magnetic resistor into a single  $R \text{ ~\rm m}$ .
- For the orientation of the magnetic voltages  $\theta_1$ ,  $\theta_2$ , and  $\theta_3$ , the orientation of the coils and the direction of the current has to be taken into account by the right-hand rule.
- There is only one flux  $\Phi$
- The magnetic voltages are antiparallel to the flux for sources and parallel for the load.



electrical\_engineering\_and\_electronics:task\_n1kwu944m7jac3tf\_with\_calculation  
magnetic circuit, exam ee2 ss2024

**Exercise E16 Magnetic Circuit**  
**(written test, approx. 10 % of a 120-minute written test, SS2024)**

2. For a sinusoidal current, the impedance  $Z$  of the circuit is equal to the input impedance  $Z_{in}$ .  
What is the equivalent series inductance  $L$  in the shown circuit?

Path

$U_C = 100 \text{ V}$

- $f = 10 \text{ MHz}$
- $R = 83.0 \text{ m}\Omega$
- $Q = 20.0$

The formula for the resonance frequency  $f_r$  is:

$$f_r = \frac{1}{2\pi\sqrt{LC}}$$

The voltage over the ideal capacitor is the input voltage by the  $Q$ -factor increased:

$$U_C = U_{in} \cdot Q = 100 \text{ V} \cdot 20 = 2000 \text{ V}$$

The impedance of the capacitor is:

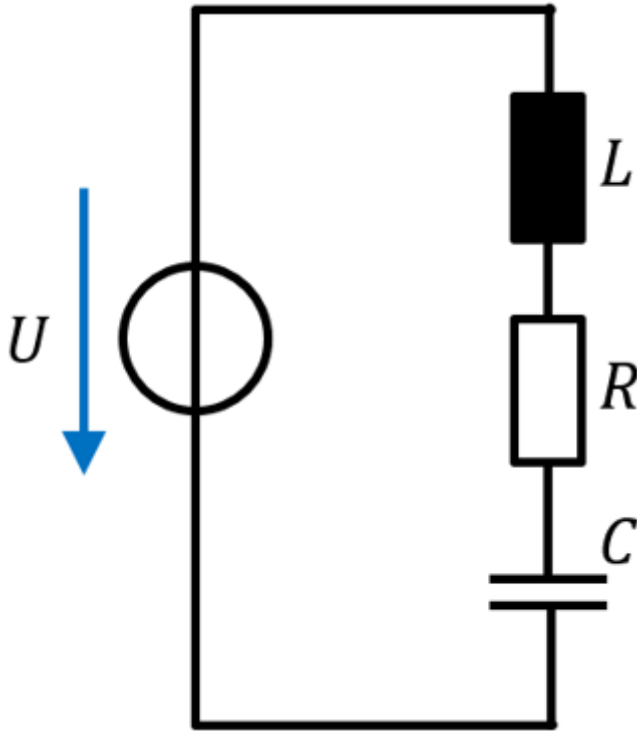
$$Z_C = \frac{1}{j\omega C} = \frac{1}{j \cdot 2\pi \cdot 10^7 \text{ s}^{-1} \cdot C}$$

The impedance of the inductor is:

$$Z_L = j\omega L = j \cdot 2\pi \cdot 10^7 \text{ s}^{-1} \cdot L$$

The total impedance is purely resistive:

$$Z_{total} = R = \frac{U_C}{I} = \frac{2000 \text{ V}}{10 \text{ A}} = 200 \Omega$$



A given capacitor shall have the following values:

- $C=10 \text{ nF}$
- $R=20 \text{ m}\Omega$
- $L=1.6 \text{ nH}$

1. What is the impedance  $Z_{\text{RLC}}$  of this real capacitor for  $f_0=44 \text{ MHz}$ ? (Phase and magnitude)

Path

The impedance is based on the resistance  $R$  and the reactance  $X_{\text{LC}} = \text{j} \cdot (X_L - X_C)$ : 
$$\underline{Z}_{\text{RLC}} = R + \text{j} \cdot (X_L - X_C) = R + \text{j} \cdot (\omega L - \frac{1}{\omega C}) = R + \text{j} \cdot (2\pi f \cdot L - \frac{1}{2\pi f \cdot C})$$

The reactive part is 
$$X_{\text{LC}} = 2\pi f \cdot L - \frac{1}{2\pi f \cdot C} = 2\pi \cdot 44 \cdot 10^6 \text{ MHz} \cdot 1.6 \cdot 10^{-9} \text{ H} - \frac{1}{2\pi \cdot 44 \cdot 10^6 \text{ MHz} \cdot 10 \cdot 10^{-9} \text{ F}} = +0.08062... \Omega$$

To get the magnitude of the impedance  $|\underline{Z}_{\text{RLC}}|$  one can use the Pythagorean Theorem: 
$$|\underline{Z}_{\text{RLC}}| = \sqrt{R^2 + X_{\text{LC}}^2} = \sqrt{(0.020 \Omega)^2 + (0.08062... \Omega)^2} = 0.0830... \Omega$$

For the phase  $\varphi$  the  $\arctan$  can be applied: 
$$\varphi = \arctan \left( \frac{X_{\text{LC}}}{R} \right) = \arctan \left( \frac{0.08062...}{0.020} \right)$$

$$\sim\Omega\over{0.020 \sim\Omega}} \right) \parallel \hat{=} 1.3276 ... \hat{=} +76^\circ \parallel$$

electrical\_engineering\_and\_electronics:task\_yh4srwxu1bo1rdy4\_with\_calculation  
 resonance, impedance, resonant circuit, exam ee2 ss2024

**Exercise E18 Magnetic Circuit**  
**(written test, approx. 10 % of a 120-minute written test, SS2024)**

2. Calculate the total impedance, the apparent power, and the active power of the 400V / 50Hz three-phase power net. Each single string has a resistor  $R=5 \Omega$  and an inductance of  $L=10 \text{ mH}$ .

**Result**

The total impedance is given by  $Z_{RL} = 5.90 \Omega$

The apparent power  $S$  is given by  $S = 3 \cdot U_s \cdot I_s = 3 \cdot \frac{U_s^2}{Z_{RL}} = 26.898 \text{ kVA}$

The active power is  $P = S \cdot \cos \varphi = 22.775 \text{ kW}$

The reactive power is  $Q = \sqrt{S^2 - P^2} = 14.310 \text{ kVAr}$

1. Calculate the  $\cos \varphi$ , and the magnitude of the impedance  $|Z|$  for a single string.

Path

The phase  $\varphi$  is given by:  $\varphi = \arctan \left( \frac{X_L}{R} \right) = \arctan \left( \frac{2\pi \cdot f \cdot L}{R} \right) = \arctan \left( \frac{2\pi \cdot 50 \text{ Hz} \cdot 10 \cdot 10^{-3} \text{ H}}{5 \Omega} \right) = 0.5609 ... \hat{=} +32^\circ$

With this, the  $\cos \varphi$  becomes  $\cos \varphi = \cos(0.5609 ...)$

$\approx 0.84673\dots$

The impedance is given by:  $|\underline{Z}_{RL}| = \sqrt{X_L^2 + R^2} = \sqrt{(2\pi \cdot f \cdot L)^2 + R^2} = \sqrt{(2\pi \cdot 50 \text{ Hz} \cdot 10 \cdot 10^{-3} \text{ H})^2 + (5 \Omega)^2} = 5.905\dots \Omega$

electrical\_engineering\_and\_electronics:task\_d9io924n0e3du21g\_with\_calculation  
resonance, impedance, resonant circuit, exam ee2 ss2024

From:  
<https://mexle.te.hs-heilbronn.de/> - **MEXLE Wiki**

Permanent link:  
[https://mexle.te.hs-heilbronn.de/electrical\\_engineering\\_and\\_electronics\\_1/ss2024\\_exam?rev=1768172840](https://mexle.te.hs-heilbronn.de/electrical_engineering_and_electronics_1/ss2024_exam?rev=1768172840)

Last update: **2026/01/12 00:07**

