

Block 18 — Magnetic Flux and Induction

Student Group

First Name	Surname	Matrikel Nr.

Table of Contents

- Block 18 — Magnetic Flux and Induction** 3
- Learning objectives* 3
- Preparation at Home* 3
- 90-minute plan* 3
- Conceptual overview* 3
- Core content* 3
- Recap of magnetic Field* 4
 - Notice: 5
 - Lenz Law 8
 - Notice: 9
 - Notice: 9
 - Moving single Charge in a magnetic Field 11
 - Notice: 11
 - Moving single Rod in a magnetic Field 12
 - Rod in Circuit 14
 - Linked Flux 17
 - Notice: 19
- Common pitfalls* 19
- Exercises* 19
 - Exercise E1 Coil in a magnetic Field (written test, approx. 4 % of a 120-minute written test, SS2021) 19
 - Exercise E2 effect of induction (written test, approx. 5 % of a 120-minute written test, SS2021) 21
 - Exercise 4.1.4 Effects of induction I 25
 - Exercise 4.1.5 Effects of induction II 26
 - Exercise 4.1.1 Magnetic Field Strength around a horizontal straight Conductor 27
 - Exercise 4.1.2 Magnetic Field Strength around a horizontal straight Conductor 29
 - Exercise 4.3.1 Calculating the Large Motional Potential difference of an Object in Orbit 29
 - Exercise 4.3.2 A Metal Rod Rotating in a Magnetic Field 29

Exercise 4.3.3 A Rectangular Coil Rotating in a Magnetic Field	31
Exercise 4.3.4 Calculating the Potential Difference Induced in a Generator Coil	32
Exercise 4.1.6 Coil in magnetic Field I	34
Exercise 4.1.7 Coil in magnetic Field II	35
Embedded resources	39

Block 18 — Magnetic Flux and Induction

Learning objectives

After this 90-minute block, you can

- ...

Preparation at Home

Well, again

- read through the present chapter and write down anything you did not understand.
- Also here, there are some clips for more clarification under 'Embedded resources' (check the text above/below, sometimes only part of the clip is interesting).

For checking your understanding please do the following exercises:

- Exercise E3 Coil in a magnetic Field
- Exercise 4.1.2 Magnetic Field Strength around a horizontal straight Conductor
- Exercise 4.1.4 Effects of induction I

90-minute plan

1. Warm-up (x min):
 1.
2. Core concepts & derivations (x min):
 1. ...
3. Practice (x min): ...
4. Wrap-up (x min): Summary box; common pitfalls checklist.

Conceptual overview

1. ...

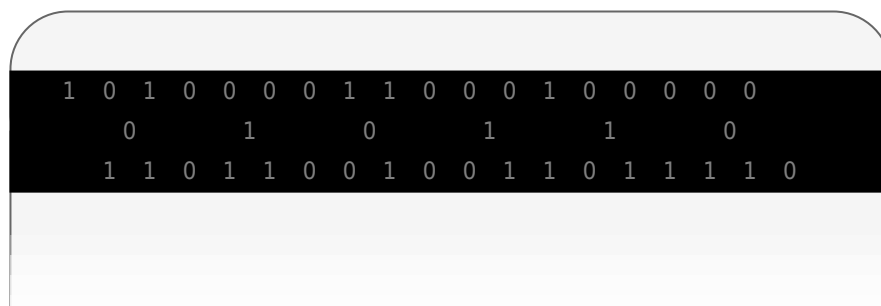
Core content

We have been considering electric fields created by fixed charge distributions and magnetic fields produced by constant currents, but electromagnetic phenomena are not restricted to these stationary situations. Most of the interesting applications of electromagnetism are, in fact, time-dependent. To investigate some of these applications, we now remove the time-independent assumption we have been making and allow the fields to vary with time. In this and the next several chapters, you will see a wonderful symmetry in the behavior exhibited by time-varying electric and magnetic fields.

Mathematically, this symmetry is expressed by an additional term in Ampère's law and by another key equation of electromagnetism called Faraday's law. We also discuss how moving a wire through a magnetic field produces a potential difference.

Lastly, we describe applications of these principles, such as the card reader shown in [figure 1](#). The black strip found on the back of credit cards and driver's licenses is a very thin layer of magnetic material with information stored on it. Reading and writing the information on the credit card is done with a swiping motion. The physical reason why this is necessary is called electromagnetic induction and is discussed in this chapter.

Fig. 1: a Credit Card as an magnetic Application



Text is not SVG - cannot display

Recap of magnetic Field

The first productive experiments concerning the effects of time-varying magnetic fields were performed by Michael Faraday in 1831. One of his early experiments is represented in the simulation in [figure 2](#) - in the tab Pickup Coil. A potential difference is induced when the magnetic field in the coil is changed by pushing a bar magnet into or out of the coil. This potential difference can generate a current when the circuit is closed. Potential differences of opposite signs are produced by motion in opposite directions, and the directions of potential differences are also reversed by reversing poles. The same results are produced if the coil is moved rather than the magnet — it is the relative motion that is important. The faster the motion, the greater the potential difference, and there is no potential difference when the magnet is stationary relative to the coil.

Fig. 2: Movement of a magnet relative to a coil produces a potential difference.

Faraday also discovered that a similar effect can be produced using two circuits: a changing current in one circuit induces a current in a second, nearby circuit. An example of this can be shown in the simulation in the tab Transformer. When the source is changed into AC and the coils are moved nearer together, the light bulb of the second circuit momentarily lights up, indicating that a short-lived current surge has been induced in that circuit.

Faraday realized that in both experiments, a current flowed in the “receiving” circuit when the magnetic field in the region occupied by that circuit was changing. As the magnet was moved, the strength of its magnetic field at the loop changed; and when the current in the AC circuit changed periodically, the strength of its magnetic field at circuit 2 changed. Faraday was eventually able to interpret these and all other experiments involving magnetic fields that vary with time in terms of the following law:

Notice:**Faraday's Law**

Any change in the magnetic field or change in the orientation of the area of a coil with respect to the magnetic field induces an electric voltage. The induced potential difference is the negative change of the so-called **magnetic flux** Φ_{m} per unit of time.

The magnetic flux is a measurement of the amount of magnetic field lines through a given surface area, as seen in [figure 3](#). The magnetic flux is the amount of magnetic field lines cutting through a surface area defined by the surface vector \vec{A} . If the angle between the $\vec{A} = A \cdot \vec{n}$ and magnetic field vector \vec{B} is parallel or antiparallel, as shown in the diagram, the absolute value of the magnetic flux is the highest possible value given the values of the area and the magnetic field.

Fig. 3: The magnetic flux is the amount of magnetic field lines cutting through a surface area A.

This definition leads to a magnetic flux similar to the electric flux studied earlier in [block14](#):

$$\Phi_{\text{m}} = \iint_A \vec{B} \cdot d\vec{A}$$

Therefore, the induced electrical potential difference generated by a conductor or coil moving in a magnetic field is

$$\boxed{u_{\text{ind}}} = -\frac{d\Phi_{\text{m}}}{dt} = -\frac{d}{dt} \iint_A \vec{B} \cdot d\vec{A}$$

The negative sign describes the direction in which the induced potential difference drives current around a circuit. However, that direction is most easily determined with a rule known as Lenz's law, which we will discuss in the next subchapter.

[figure 4](#) depicts a circuit and an arbitrary surface S that it bounds. Notice that S is an open surface: The planar area bounded by the circuit is not part of the surface, so it is not fully enclosing a volume.

Since the magnetic field is a source-free vortex field, the flux over a closed area is always zero:

$$\Phi_{\text{m}} = \oiint_{\text{A}} \vec{B} \cdot d\vec{A} = 0$$

By this, it can be shown that any open surface bounded by the circuit in question can be used to evaluate Φ_{m} (similar to the [Gauss's law for current density](#)). For example, Φ_{m} is the same for the various surfaces S , S_1 , S_2 of the figure.

Fig. 4: A circuit bounding an arbitrary open surface S .



The SI unit for magnetic flux is the Weber (Wb),
$$\begin{aligned} [\Phi_{\text{m}}] &= [\text{B}] \cdot [\text{A}] = \\ &1 \text{ T} \cdot \text{m}^2 = 1 \text{ Wb} \end{aligned}$$

Based on this definition, the magnetic field unit is occasionally expressed as Weber per square meter (Wb/m^2) instead of teslas. In many practical applications, the circuit of interest consists of a number N of tightly wound turns (similar to [figure 5](#)). Each turn experiences the same magnetic flux Φ_{m} . Therefore, the net magnetic flux through the circuits is N times the flux through one turn, and Faraday's law is written as

$$\begin{aligned} u_{\text{ind}} &= - \left\{ \frac{\text{d}}{\text{d}t} (N \cdot \Phi_{\text{m}}) \right\} = -N \cdot \left\{ \frac{\text{d}}{\text{d}t} \Phi_{\text{m}} \right\} \end{aligned}$$

Lenz Law

The direction in which the induced potential difference drives current around a wire loop can be found through the negative sign. However, it is usually easier to determine this direction with Lenz's law, named in honor of its discoverer, Heinrich Lenz (1804–1865). (Faraday also discovered this law, independently of Lenz.) We state Lenz's law as follows:

Notice:**Lenz's Law**

The direction of the induced potential difference drives current around a wire loop to always oppose the change in magnetic flux that causes the potential difference.

Lenz's law can also be considered in terms of the conservation of energy. If pushing a magnet into a coil causes current, the energy in that current must have come from somewhere. If the induced current causes a magnetic field opposing the increase in the field of the magnet we pushed in, then the situation is clear. We pushed a magnet against a field and did work on the system, and that showed up as current. If it were not the case that the induced field opposes the change in the flux, the magnet would be pulled in produce a current without anything having done work. Electric potential energy would have been created, violating the conservation of energy.

To determine an induced potential difference \mathcal{U}_{ind} , you first calculate the magnetic flux Φ_{m} and then obtain $-\frac{d\Phi_{\text{m}}}{dt}$. The magnitude of \mathcal{U}_{ind} is given by

$$|\mathcal{U}_{\text{ind}}| = \left| -\frac{d\Phi_{\text{m}}}{dt} \right|$$

Finally, you can apply Lenz's law to determine the sense of \mathcal{U}_{ind} . This will be developed through examples that illustrate the following problem-solving strategy.

Notice:**Problem-Solving Strategy: Lenz's Law**

To use Lenz's law to determine the directions of induced potential difference, currents, and magnetic fields:

1. Make a sketch of the situation to visualize and record the directions of fields, movements etc. .
2. Determine the direction of the applied magnetic field \vec{B} .
3. Determine whether the magnitude of its magnetic flux is increasing or decreasing.
4. Now determine the direction of the induced magnetic field \vec{B}_{ind} .
The induced magnetic field attempts to withstand its cause: It tries to strengthen a decreasing magnetic flux (or to counteract an increasing magnetic flux). Therefore, the induced magnetic field adds or subtracts from the applied magnetic field, depending on the change in magnetic flux.
5. Use the right-hand rule to determine the direction of the induced current i_{ind} that is responsible for the induced magnetic field \vec{B}_{ind} .
6. The direction (or polarity) of the induced potential difference can now drive a conventional current in this direction.

Let's apply Lenz's law to the system of [figure 5](#). We designate the "front" of the closed conducting loop as the region containing the approaching bar magnet, and the "back" of the loop as the other region. The north pole of the magnet moves toward the loop. Therefore, the flux through the loop due to the field of the magnet increases because the strength of field lines directed from the front to the

back of the loop is increasing. A current is consequently induced in the loop. By Lenz's law, the direction of the induced current must be such that its own magnetic field is directed in a way to oppose the changing flux caused by the field of the approaching magnet. Hence, the induced current circulates so that its magnetic field lines through the loop are directed from the back to the front of the loop. By the right-hand rule, place your thumb pointing against the magnetic field lines, which is toward the bar magnet. Your fingers wrap in a counterclockwise direction as viewed from the bar magnet. Alternatively, we can determine the direction of the induced current by treating the current loop as an electromagnet that opposes the approach of the north pole of the bar magnet. This occurs when the induced current flows as shown, for then the face of the loop nearer the approaching magnet is also a north pole.

Fig. 5: The change in magnetic flux caused by the approaching magnet induces a current in the loop.

Part (b) of the figure shows the south pole of a magnet moving toward a conducting loop. In this case,

the flux through the loop due to the field of the magnet increases because the number of field lines directed from the back to the front of the loop is increasing. To oppose this change, a current is induced in the loop whose field lines through the loop are directed from the front to the back. Equivalently, we can say that the current flows in a direction so that the face of the loop nearer the approaching magnet is a south pole, which then repels the approaching south pole of the magnet. By the right-hand rule, your thumb points away from the bar magnet. Your fingers wrap in a clockwise fashion, which is the direction of the induced current.

An animation of this situation can be seen [here](#).

Moving single Charge in a magnetic Field

Instead of a current in the magnetic field, we will now have a look on a charge moving in the magnetic field.

Since the electrical current I is based on a moving charge ($I = \frac{dQ}{dt}$), also a moving charge has to feel a force.

To find this force the force onto a conductor can be used as a start (see [block17](#)). However, the formula will be investigated infinitesimally for small parts $d\vec{l}$ of the conductor:

$$\vec{F}_{L} = I \, d\vec{l} \times \vec{B}$$

The current is now substituted by $I = \frac{dQ}{d\,t}$, where dQ is the small charge packet in the length $d\vec{l}$ of the conductor.

$$\vec{F}_{L} = \left\{ \frac{dQ}{d\,t} \right\} \cdot d\vec{l} \times \vec{B}$$

Mathematically not quite correct, but in a physical way true the following rearrangement can be done:

$$\vec{F}_{L} \quad \&= \quad \left\{ \frac{dQ \cdot d\vec{l}}{d\,t} \right\} \times \vec{B} \quad \&= \quad dQ \cdot \left\{ \frac{d\vec{l}}{d\,t} \right\} \times \vec{B} \quad \&= \quad dQ \cdot \left\{ \frac{d\vec{l}}{d\,t} \right\} \times \vec{B}$$

Here, the part $\left\{ \frac{d\vec{l}}{d\,t} \right\}$ represents the speed \vec{v} of the small charge packet dQ .

$$\vec{F}_{L} \quad \&= \quad dQ \cdot \vec{v} \times \vec{B}$$

The **Lorenz Force** on a finite charge packet is the integration:

$$\boxed{\vec{F}_{L} = Q \cdot \vec{v} \times \vec{B}}$$

Notice:

- A charge Q moving with a velocity \vec{v} in a magnetic field \vec{B} experiences a force of \vec{F}_{L} .
- The direction of the force is given by the right-hand rule.
- The true Lorentz force is not the force on the whole conductor but the single force onto an (elementary) charge.

Moving single Rod in a magnetic Field

Coming from a single free charge, let us have a look onto free charges in a conductor, when the conductor is moving.

These are also free to move within the borders of the conducting material and the given fields.

The first step to investigate the motional induction is shown in [figure 6](#): a single conducting rod with the length l is moving with a constant velocity v through a homogenous magnetic field $\vec{B} \perp \vec{v} \perp \vec{l}$.

- The charges in the rod experience the Lorentz force F_{L} .
- By this force, the positive charges move to one end of the rod and the negative to the other one.
- The separated charges create a potential difference and by this, a Coulomb force F_{C} onto the charges within the rod.
- For a constant speed, the Lorentz force onto charges in the rod must have the same magnitude as the Coulomb force.

Fig. 6: motional Induction on a single Rod



This leads to:

$$\begin{aligned} \vec{F}_{\text{C}} &= - \vec{F}_{\text{L}} \\ Q \cdot \vec{E}_{\text{ind}} &= - Q \cdot \vec{v} \times \vec{B} \\ \vec{E}_{\text{ind}} &= - \vec{v} \times \vec{B} \end{aligned}$$

The induced potential difference in the rod will be:

$$\begin{aligned} u_{\text{ind}} &= \int_l \vec{E}_{\text{ind}} \cdot d\vec{s} \\ &= - \int^0_1 \vec{v} \times \vec{B} \cdot d\vec{s} \end{aligned}$$

For constant \$|\vec{v}|\$ and \$|\vec{B}|\$ this leads to:
$$u_{\text{ind}} = - v \cdot B \cdot l$$

Rod in Circuit

Now let's look at the conducting rod pulled in a circuit, changing magnetic flux. The area enclosed by the circuit '0123' of [figure 7](#) is $\ell \cdot x$ and is perpendicular to the magnetic field.

Fig. 7: Example for calculating the motional Induction

The velocity of the rod is $v = \frac{dx}{dt}$. So the induced potential difference will get

$$u_{\text{ind}} = -v \cdot B \cdot \ell = - \frac{dx}{dt} \cdot B \cdot \ell = - \frac{B \cdot \ell \cdot dx}{dt} = - \frac{B \cdot \ell \cdot dA}{dt} = - \frac{d\Phi_m}{dt}$$

This is an alternative way to deduce Faraday's Law.

The current i_{ind} induced in the given circuit is u_{ind} divided by the resistance R

$$\begin{aligned} i_{\text{ind}} = \frac{v \cdot B \cdot l}{R} \end{aligned}$$

Furthermore, the direction of the induced potential difference satisfies Lenz's law, as you can verify by inspection of the figure.

The situation of the single rod can be interpreted in the following way: We can calculate a motionally induced potential difference with Faraday's law even when an actual closed circuit is not present. We simply imagine an enclosed area whose boundary includes the moving conductor, calculate Φ_{m} , and then find the potential difference from Faraday's law. For example, we can let the moving rod of [figure 8](#) be one side of the imaginary rectangular area represented by the dashed lines. The area of the rectangle is $A = l \cdot x$, so the magnetic flux through it is $\Phi = B \cdot l \cdot x$. Differentiating this equation, we obtain

$$\begin{aligned} u_{\text{ind}} &= - \frac{d}{dt} \Phi_{\text{m}} \quad \&= - B \cdot l \cdot \frac{dx}{dt} \\ &= - B \cdot l \cdot v \end{aligned}$$

which is identical to the potential difference between the ends of the rod that we determined earlier.

Fig. 8: motional Induction on a single Rod revisited

Linked Flux

When looking at the magnetic field in a coil multiple windings capture the passing flux, see [figure 9](#) (a). It can also be interpreted in such a way that the flux is going through the closed surface of the circuit multiple times (in picture (b)).

Fig. 9: Example for a linked Flux

The **linked flux** Ψ is defined as the resulting flux given by the sum of the partial fluxes of the closed circuit.

$$\Psi = \sum_{i=1}^n \Phi_i$$

For the case of a coil with N windings, this leads to:

$$\Psi = N \cdot \Phi$$

Notice:

When calculating the force, use the flux within the material (Φ).
When investigating effects in the coil, use the linked flux (Ψ).

Common pitfalls

- ...

Exercises

Exercise E1 Coil in a magnetic Field (written test, approx. 4 % of a 120-minute written test, SS2021)

A coil with $n = 300$ turns and a cross-sectional area $A = 600 \text{ cm}^2$ is located in a homogeneous magnetic field.

The rotation of the coil causes a sinusoidal change in the magnetic field in the coil with the frequency $f = 80 \text{ Hz}$.

The maximum value of the magnetic flux density in the coil is $\hat{B} = 2 \cdot 10^{-6} \text{ Vs/cm}^2$.
The induced voltage U_{ind} is:

$$U_{\text{ind}} = -181 \text{ V} \cdot \cos(503 t)$$



Derive the formula for the voltage induced in the coil and calculate the voltage amplitude.

Path

The induced voltage u_{ind} is given by:

$$\begin{aligned} u_{\text{ind}} &= - \frac{d\Phi(t)}{dt} \quad \&= - n \frac{d\Phi(t)}{dt} \end{aligned}$$

With $\Phi(t) = B(t) \cdot A$, where A is the constant area of a single winding and $B(t)$ is the changing field through this winding.

Due to the rotation, the field changes as:

$$\begin{aligned} B(t) &= \hat{B} \cdot \sin(\omega t + \varphi) \quad \&= \hat{B} \cdot \sin(2\pi f \cdot t + \varphi) \end{aligned}$$

$$\begin{aligned} \text{This leads to: } u_{\text{ind}} &= - n \frac{d}{dt} A \hat{B} \cdot \sin(2\pi f \cdot t + \varphi) \quad \&= - n \cdot A \hat{B} \cdot 2\pi f \cdot \cos(2\pi f \cdot t + \varphi) \end{aligned}$$

$$\begin{aligned} \text{The absolute value of the factor in front of the } \cos & \text{ is the maximum induced voltage } \hat{U}_{\text{ind}}: \\ \hat{U}_{\text{ind}} &= n \cdot A \hat{B} \cdot 2\pi f \quad \&= 300 \cdot 0.06 \text{ m}^2 \cdot 2 \cdot 10^{-2} \text{ s}^{-1} \\ & \cdot \frac{\text{Vs}}{\text{m}^2} \cdot 2\pi \cdot 80 \text{ s}^{-1} \quad \&= 180.95... \text{ V} \\ & \cdot \frac{\text{Vs}}{\text{m}^2} \cdot \frac{1}{\text{s}} \quad \&= 180.95... \text{ V} \end{aligned}$$

Exercise E2 effect of induction (written test, approx. 5 % of a 120-minute written test, SS2021)

A single conductor loop is penetrated by a changing magnetic flux.

The following figure shows the variation of the flux $\Phi(t)$ over time.

Calculate the variation of the induced voltage $u_{\text{ind}}(t)$ over time and draw it in a separate diagram.

\$\$u_{\text{ind}}(t) = - \frac{d\Phi(t)}{dt}

\$\$\Phi(t) = \dots

Path

Based on Faraday's Law of Induction the induced voltage is given by:
$$u_{\text{ind}} = - \frac{d\Phi(t)}{dt} = - \frac{d}{dt} \int \mathbf{B} \cdot d\mathbf{s}$$

For a linear function, the derivative can be substituted by Deltas ($\frac{d}{dt} \rightarrow \frac{\Delta}{\Delta t}$):

$$u_{\text{ind}} = - \frac{\Delta \Phi(t)}{\Delta t} = - \frac{\Phi(t_{n+1}) - \Phi(t_n)}{t_{n+1} - t_n}$$

For a piece-wise linear function, the induced voltage can be calculated for each interval.

Here, there are 5 different intervals - in the following called I to V from left to right:

...

- For the intervals I , III , and V , the flux $\Phi(t)$ is constant. Therefore, $\Delta \Phi(t) = 0$ and $u_{\text{ind}}(t) = 0$.

\$\$\dots\$\$

- For the interval Δt :
 - The change in the flux is: $\Delta \Phi(t) = 1.5 \cdot 10^{-4} \text{ Vs} - 4.5 \cdot 10^{-4} \text{ Vs} = -3.0 \cdot 10^{-4} \text{ Vs}$
 - The time span is: 0.2 s
 - Conclusively, the induced voltage is: $u_{\text{ind}}(t) = + \frac{3.0 \cdot 10^{-4} \text{ Vs}}{0.2 \text{ s}} = 1.5 \text{ mV}$

- For the interval IV :
 - The change in the flux is: $\Delta \Phi(t) = 0 \cdot 10^{-4} \text{ Vs} - 1.5 \cdot 10^{-4} \text{ Vs} = -1.5 \cdot 10^{-4} \text{ Vs}$
 - The time span is: 0.2 s
 - Conclusively, the induced voltage is: $u_{\text{ind}}(t) = + \frac{1.5 \cdot 10^{-4} \text{ Vs}}{0.2 \text{ s}} = 0.75 \text{ mV}$

\$\$\dots\$\$

Exercise 4.1.4 Effects of induction I

A change of magnetic flux is passing a coil with a single winding. The following pictures [figure 10](#) show different flux-time-diagrams as examples.

- Create for each $\Phi(t)$ -diagram the corresponding $u_{\text{ind}}(t)$ -diagram!
- Write down each maximum value of $u_{\text{ind}}(t)$

Fig. 10: Flux-Time-Diagrams

««|Ph

««|Ph

Solution for (a)

For partwise linear u_{ind} one can derive:
$$u_{\text{ind}} = -\frac{d\Phi}{dt} \quad \&= -\frac{\Delta \Phi}{\Delta t}$$

For diagram (a):

- $t = 0.0 \dots 0.6 \text{ s}$: $u_{\text{ind}} = -\frac{0 \text{ Vs}}{0.6 \text{ s}} = 0$
- $t = 0.6 \dots 1.5 \text{ s}$: $u_{\text{ind}} = -\frac{-3.75 \cdot 10^{-3} \text{ Vs}}{0.9 \text{ s}} = +4.17 \text{ mV}$
- $t = 1.5 \dots 2.1 \text{ s}$: $u_{\text{ind}} = -\frac{0 \text{ Vs}}{0.6 \text{ s}} = 0$

Final result for (a)

Fig. 10: Flux-Time-Diagrams Solution

ssu_{...}

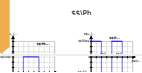
Exercise 4.1.5 Effects of induction II

A changing of magnetic flux is passing a coil with a single winding and induces the voltage $u_{\text{ind}}(t)$. The following pictures [figure 12](#) show different voltage-time diagrams as examples.

- Create for each $u_{\text{ind}}(t)$ -diagram the corresponding $\Phi(t)$ -diagram!
- Write down each maximum value of $\Phi(t)$

Note the given start value Φ_0 for each flux.

fig. 12: Voltage-Time-Diagrams



Solution for (a)

For partwise linear u_{ind} one can derive:
$$u_{\text{ind}} = - \frac{d\Phi}{dt} \implies \Phi = - \int_0^t u_{\text{ind}} dt + \Phi_0$$

$$\Phi = \Phi_0 - \sum_k \{u_{\{\text{ind}\}, \sim k} \}; \Delta t$$

For diagram (a):

- $t = 0.00 \dots 0.04 \text{ s}$: $\Phi = \Phi_0 - 0 \cdot \Delta t = 0 \text{ Wb}$
- $t = 0.04 \dots 0.10 \text{ s}$: $\Phi = 0 \text{ Wb} - \{30 \text{ mV}\} \cdot (t - 0.04 \text{ s}) = \{1.2 \text{ mWb}\} - t \cdot 30 \text{ mV}$
- $t = 0.10 \dots 0.14 \text{ s}$: $\Phi = \{1.2 \text{ mWb}\} - \{0.10 \text{ s}\} \cdot 30 \text{ mV} = -\{1.8 \text{ mWb}\}$

Exercise 4.1.1 Magnetic Field Strength around a horizontal straight Conductor

The square coil of [figure 5](#) has sides $l=0.25 \text{ m}$ long and is tightly wound with $N=200$ turns of wire. The resistance of the coil is $R=5.0 \Omega$. The coil is placed in a spatially uniform magnetic field. The field is directed perpendicular to the face of the coil and whose magnitude is decreasing at a rate $\frac{dB}{dt} = -0.040 \text{ T/s}$.

1. What is the magnitude of the potential difference induced in the coil?
2. What is the magnitude of the current circulating through the coil?

Fig. 5: A square coil with N turns of wire with uniform magnetic field B directed in the

downward direction, perpendicular to the coil

Strategy

The surface \vec{A} is perpendicular to the area covering the loop. We will choose this to be pointing downward so that \vec{B} is parallel to \vec{A} and that the flux turns into the multiplication of magnetic field times area. The area of the loop is not changing in time, so it can be factored out of the time derivative, leaving the magnetic field as the only quantity varying in time. Lastly, we can apply Ohm's law once we know the induced potential difference to find the current in the loop.

Solution

The flux through one turn is

$$\begin{align*} \Phi_{\text{m}} = B \cdot A \end{align*}$$

We can calculate the magnitude of the potential difference $|u_{\text{ind}}|$ from Faraday's law:

$$\begin{align*} |u_{\text{ind}}| &= \left| - \frac{d}{dt} (N \cdot \Phi_{\text{m}}) \right| = \left| -N \cdot \frac{d}{dt} (B \cdot A) \right| = N \cdot l^2 \cdot \frac{dB}{dt} \\ &= (200)(0.25 \text{ m})^2(0.040 \text{ T/s}) = 0.50 \text{ V} \end{align*}$$

The magnitude of the current induced in the coil is

$$\begin{align*} |I| &= \frac{|u_{\text{ind}}|}{R} = \frac{0.50 \text{ V}}{5.0 \text{ } \Omega} \\ &= 0.10 \text{ A} \end{align*}$$

Exercise 4.1.2 Magnetic Field Strength around a horizontal straight Conductor

A closely wound coil has a radius of 4.0 cm , 50 turns, and a total resistance of $40 \text{ } \Omega$.

At what rate must a magnetic field perpendicular to the face of the coil change in order to produce Joule heating in the coil at a rate of 2.0 mW ?

Result

$$1.1 \text{ T/s}$$

Exercise 4.3.1 Calculating the Large Motional Potential difference of an Object in Orbit

Calculate the potential difference motionally induced along a 20.0 km conductor moving at an orbital speed of 7.80 km/s perpendicular to Earth's $5.00 \cdot 10^{-5} \text{ T}$ magnetic field.

Solution

This is a great example of using the equation motional $u_{\text{ind}} = -B \cdot l \cdot v$

Entering the given values into $u_{\text{ind}} = -B \cdot l \cdot v$ gives

$$\begin{align*} u_{\text{ind}} &= - \left(\frac{d}{dt} \Phi_{\text{m}} \right) = -B \cdot l \cdot v \\ &= - (5.00 \cdot 10^{-5} \text{ T})(20.0 \cdot 10^3 \text{ m})(7.80 \cdot 10^3 \text{ m/s}) \end{align*}$$

Result

$$\begin{align*} u_{\text{ind}} &= -7.80 \cdot 10^3 \text{ V} \end{align*}$$

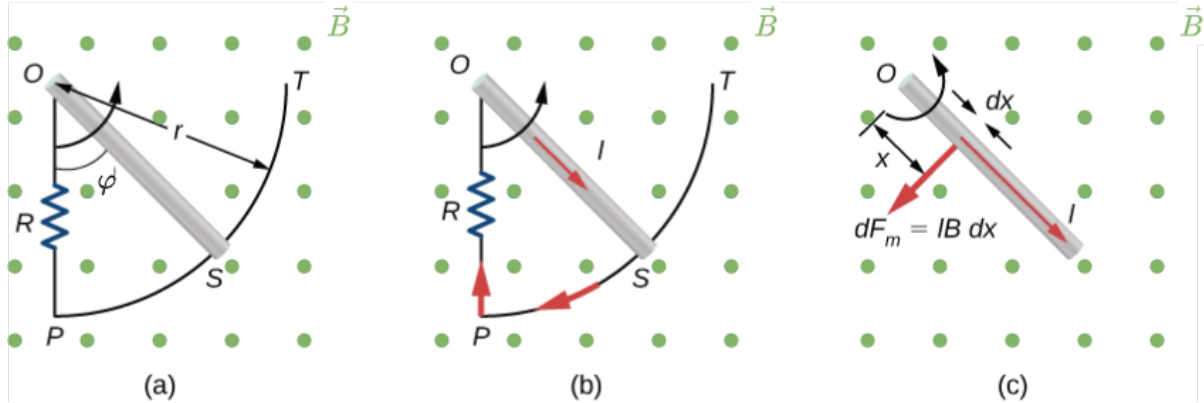
Exercise 4.3.2 A Metal Rod Rotating in a Magnetic Field

Part (a) of [figure 14](#) shows a metal rod OS that is rotating in a horizontal plane around point O . The rod slides along a wire that forms a circular arc PST of radius r .

The system is in a constant magnetic field \vec{B} that is directed out of the page.

If you rotate the rod at a constant angular velocity ω , what is the current I_{ind} in the closed loop OPSO ? Assume that the resistor R furnishes all of the resistance in the closed loop.

Fig. 14: motional Induction on a rotating single Rod



Strategy

The magnetic flux is the magnetic field times the area of the quarter circle or $A = r^2 \varphi / 2$. When finding the potential difference through Faraday's law, all variables are constant in time but φ , with $\omega = d\varphi/dt$. To calculate the work per unit time, we know this is related to the torque times the angular velocity. The torque is calculated by knowing the force on a rod and integrating it over the length of the rod.

Solution

From geometry, the area of the loop OPSO is $A = r^2 \varphi / 2$. Hence, the magnetic flux through the loop is

$$\Phi_{\text{m}} = B \cdot A = B \cdot \left\{ \frac{r^2 \varphi}{2} \right\}$$

Differentiating with respect to time and using $\omega = d\varphi/dt$, we have

$$u_{\text{ind}} = \left| \frac{d\Phi_{\text{m}}}{dt} \right| = B \cdot \left\{ \frac{r^2 \omega}{2} \right\}$$

When divided by the resistance R of the loop, this yields the magnitude of the induced current

$$i_{\text{ind}} = \left\{ \frac{u_{\text{ind}}}{R} \right\} = B \cdot \left\{ \frac{r^2 \omega}{2R} \right\}$$

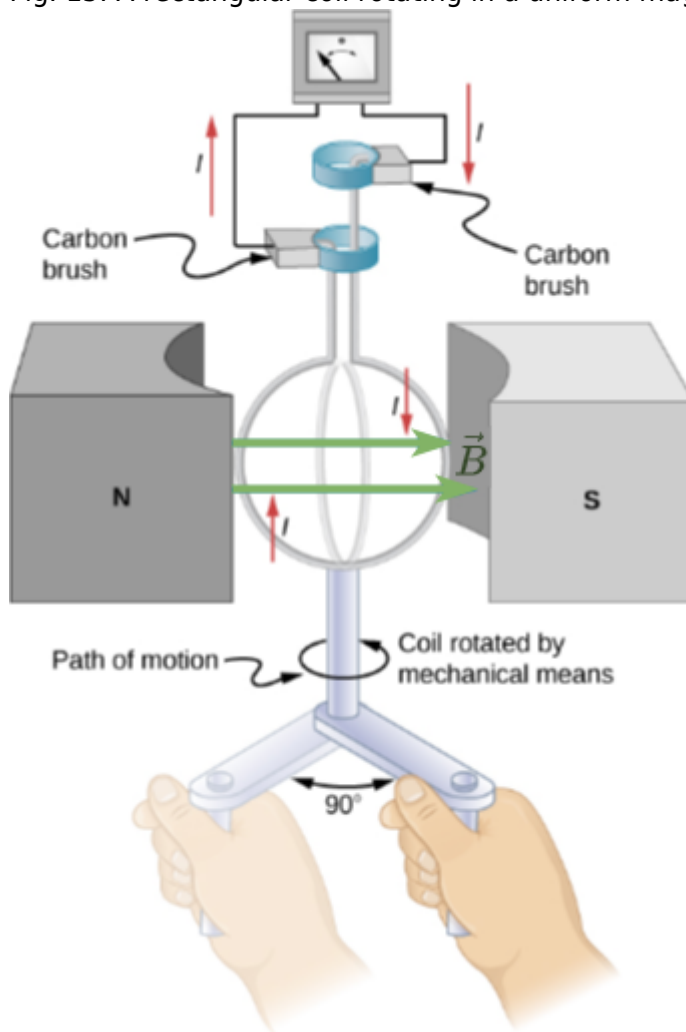
As φ increases, so does the flux through the loop due to \vec{B} . To counteract this increase, the magnetic field due to the induced current must be directed into the page in the region enclosed by the loop. Therefore, as part (b) of figure 14 illustrates, the current circulates clockwise.

Exercise 4.3.3 A Rectangular Coil Rotating in a Magnetic Field

The following example is the basis for an electric generator: A rectangular coil of area A and N turns is placed in a uniform magnetic field \vec{B} , as shown in figure 15. The coil is rotated about the z -axis through its center at a constant angular velocity ω .

Obtain an expression for the induced potential difference u_{ind} in the coil.

Fig. 15: A rectangular coil rotating in a uniform magnetic field



Strategy

According to the diagram, the angle between the surface vector \vec{A} and the magnetic field \vec{B} is φ . The dot product of $\vec{A} \cdot \vec{B}$ simplifies to only the $\cos \varphi$ component of the magnetic field times the area, namely where the magnetic field projects onto the unit surface vector \vec{A} . The magnitude of the magnetic field and the area of the loop are fixed over time, which makes the integration simpler. The induced potential difference is written out using Faraday's law.

Solution

When the coil is in a position such that its surface vector \vec{A} makes an angle φ with the magnetic field \vec{B} the magnetic flux through a single turn of the

coil is

$$\Phi_{\text{m}} = \iint \vec{B} \cdot \vec{A} = BA \cos \varphi$$

From Faraday's law, the induced potential difference in the coil is

$$u_{\text{ind}} = -N \frac{d\Phi_{\text{m}}}{dt} = -NBA \sin \varphi \cdot \frac{d\varphi}{dt}$$

The constant angular velocity is $\omega = \frac{d\varphi}{dt}$. The angle φ represents the time evolution of the angular velocity or ωt . This changes the function to time-space rather than φ . The induced potential difference, therefore, varies sinusoidally with time according to

$$u_{\text{ind}} = U_{\text{ind},0} \cdot \sin \omega t$$

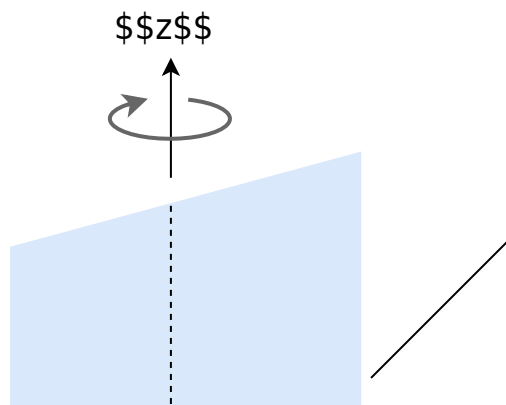
where $U_{\text{ind},0} = NBA\omega$.

Exercise 4.3.4 Calculating the Potential Difference Induced in a Generator Coil

The generator coil shown in [figure 16](#) is rotated through one-fourth of a revolution (from $\varphi_0=0^\circ$ to $\varphi_1=90^\circ$) in 5.0 ms . The 200 -turn circular coil has a 5.00 cm radius and is in a uniform 0.80 T magnetic field.

What is the value of the induced potential difference?

Fig. 16: When this generator coil is rotated through one-fourth of a revolution, the magnetic flux changes from its maximum to zero, inducing a potential difference.



Strategy

Faraday's law of induction is used to find the potential difference induced:

$$\begin{aligned} u_{\text{ind}} &= - N \frac{d\Phi_{\text{m}}}{dt} \end{aligned}$$

We recognize this situation as the same one in the exercise before. According to the diagram, the projection of the surface vector \vec{A} to the magnetic field is initially $A \cos \varphi$, and this is inserted by the definition of the dot product. The magnitude of the magnetic field and the area of the loop are fixed over time, which makes the integration simplify quick. The induced potential difference is written out using Faraday's law:

$$\begin{aligned} u_{\text{ind}} &= N B A \sin \varphi \frac{d\varphi}{dt} \end{aligned}$$

Solution

We are given that $N=200$, $B=0.80\text{~}\text{m T}$, $\varphi = 90^\circ$, $\Delta\varphi=90^\circ=\pi/2$, and $\Delta t=5.0\text{~}\text{ms}$.

The area of the loop is

$$\begin{aligned} A &= \pi r^2 = 3.14 \cdot (0.0500\text{~}\text{m})^2 = 7.85 \cdot 10^{-3} \text{~}\text{m}^2 \end{aligned}$$

Result

Entering this value gives

$$\begin{aligned} U_{\text{ind}} &= 200 \cdot 0.80 \text{~}\text{T} \cdot (7.85 \cdot 10^{-3} \text{~}\text{m}^2) \\ &\cdot \sin 90^\circ \cdot \frac{\pi/2}{5.0 \cdot 10^{-3} \text{~}\text{s}} = 395 \text{~}\text{V} \end{aligned}$$

Exercise 4.1.6 Coil in magnetic Field I

A single winding is located in a homogenous magnetic field ($B = 0.5\text{~}\text{T}$) between the pole pieces. The winding has a length of $150\text{~}\text{mm}$ and a distance between the conductors of $50\text{~}\text{mm}$ (see [figure 17](#)).

- Determine the function $u_{\text{ind}}(t)$, when the coil is rotating with $3000\text{~}\text{min}^{-1}$.
- Given a current of $20\text{~}\text{A}$ through the winding: What is the torque $M(\varphi)$ depending on the angle between the surface vector of the winding and the magnetic field?

Fig. 17: Winding between Pole Pieces



Solution

$$\begin{aligned} u_{\text{ind}} &= - \frac{d\Phi}{dt} = - \frac{d}{dt} (B \cdot A) = - B \cdot \frac{dA}{dt} \\ &= - B \cdot \left(l \cdot \frac{d}{dt} (d \cdot \cos(\omega t)) \right) = + B \cdot l \cdot d \cdot \omega \cdot \sin(\omega t) \end{aligned}$$

Exercise 4.1.7 Coil in magnetic Field II

A rectangular coil is given by the sizes $a=10 \text{ cm}$, $b=4 \text{ cm}$, and the number of windings $N=200$. This coil moves with a constant speed of $v=2 \text{ m/s}$ perpendicular to a homogeneous magnetic field ($B=1.3 \text{ T}$ on a length of $l=5 \text{ cm}$). The area of the coil is tilted with regard to the field in $\alpha=60^\circ$ and enters the field from the left

side (see [figure 18](#)).

- Determine the function $u_{\text{ind}}(t)$ on the coil along the given path. Sketch of the $u_{\text{ind}}(t)$ diagram.
- What is the maximum induced voltage $u_{\text{ind,Max}}$?

Fig. 18: Winding between Pole Pieces

Solution

Let assume, that I is in the x -axis, \vec{B} in the y -axis and a .

Step 1: Calculate the effective area, perpendicular to the \vec{B} -field (independent from whether the area is in the \vec{B} -field or not).

For this b has to be projected onto the plane perpendicular to the \vec{B} -field: $b_{\text{eff}} = b \cdot \cos \alpha$
 $A_{\text{eff}} = a \cdot b \cdot \cos \alpha$

Step 2: Focus on entering and exiting the \vec{B} -field.

Induction only occurs for $\frac{d}{dt}(A \cdot B) \neq 0$, so here: when the area A_{eff} enters and leaves the constant \vec{B} -field.

When entering the \vec{B} -field the area A with $0 < A < A_{\text{eff}}$ is in the field. The area moves with v . Therefore, after $\Delta t = b_{\text{eff}} \cdot v$ the full \vec{B} -field is provided onto the area A_{eff} :

$$u_{\text{ind}} = - \frac{d\psi}{dt} = -N \cdot \frac{d}{dt} (B \cdot A) = -N \cdot \frac{d}{dt} (B \cdot A_{\text{eff}}) = -N \cdot \frac{d}{dt} (B \cdot a \cdot b \cdot \cos \alpha) = -N \cdot B \cdot \frac{d}{dt} (a \cdot v)$$

The following diagram shows ...

- ... how one can derive the effective width b_{eff} , which is projected onto the plane perpendicular to the \vec{B} -field: $b_{\text{eff}} = b \cdot \cos \alpha$
- ... what happens on the effective area A_{eff} : there is a change of the field lines in the area only for entering and leaving the \vec{B} -field.
- ... how the $u_{\text{ind}}(t)$ looks as a graph: the part of A_{eff} , where the \vec{B} -field passes through increase linearly due to the constant speed v

Be aware, that the task did not provide a clue for the direction of windings and therefore it provides no clue for the polarization of the induced voltage.

So, the course of the voltage when entering or exiting is not uniquely given.

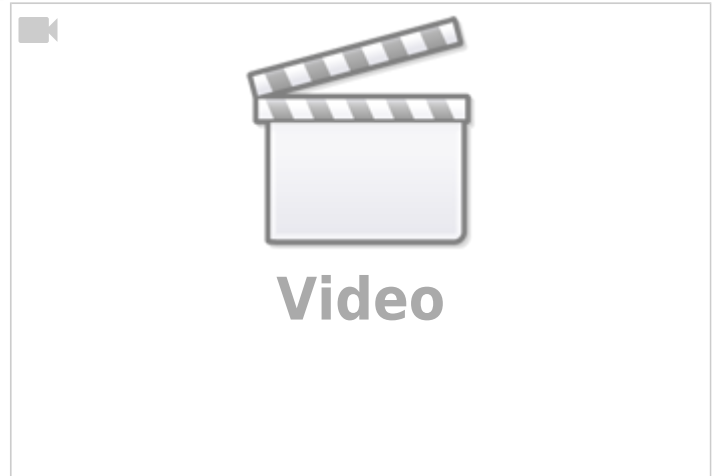
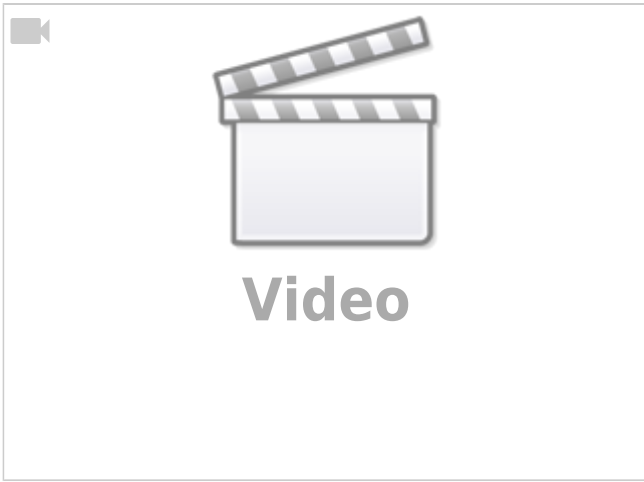
Fig. 19: Solution

⌕ ⌕ |

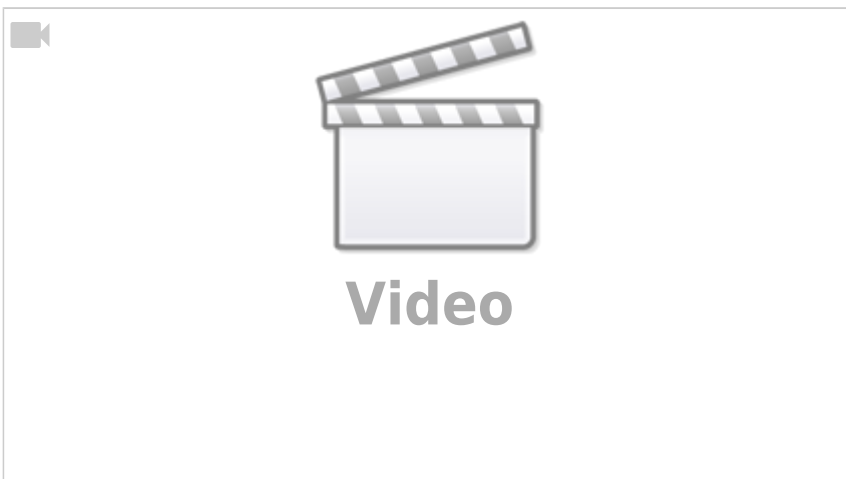
Embedded resources

How magnetism really works

Application of Eddy currents



Application of Eddy currents



From:
<https://mexle.te.hs-heilbronn.de/> - MEXLE Wiki

Permanent link:
https://mexle.te.hs-heilbronn.de/electrical_engineering_and_electronics_1/block18?rev=1765631757

Last update: 2025/12/13 14:15

