

Exam Winter Semester 2022

Student Group

First Name	Surname	Matrikel Nr.

Table of Contents

Exercise E4 Resistance of a Wire by Resistivity (written test, approx. 6 % of a 60-minute written test, WS2022)	3
Exercise E1 Resistance of a Wire by Resistivity (written test, approx. 6 % of a 60-minute written test, WS2022)	3
Exercise E1 Temperature-dependent Resistance (written test, approx. 6 % of a 60-minute written test, WS2022)	3
Exercise E2 Temperature-dependent Resistance (written test, approx. 6 % of a 60-minute written test, WS2022)	4
Exercise E6 Pure Resistor Network Simplification (written test, approx. 13 % of a 60-minute written test, WS2022)	5
Exercise E3 Pure Resistor Network Simplification (written test, approx. 13 % of a 60-minute written test, WS2022)	6
Exercise E1 Equivalent linear Source (written test, approx. 14 % of a 60-minute written test, WS2022)	8
Exercise E3 Equivalent linear Source (written test, approx. 14 % of a 60-minute written test, WS2022)	12
Exercise E5 Charging Capacitors (written test, approx. 16 % of a 60-minute written test, WS2022)	16
Exercise E4 Charging Capacitors (written test, approx. 16 % of a 60-minute written test, WS2022)	17
Exercise E2 Analyzing complex Impedances (written test, approx. 14 % of a 60-minute written test, WS2022)	19
Exercise E5 Analyzing complex Impedances (written test, approx. 14 % of a 60-minute written test, WS2022)	19
Exercise E3 Impedances at different Frequencies (written test, approx. 18 % of a 60-minute written test, WS2022)	20
Exercise E6 Impedances at different Frequencies (written test, approx. 18 % of a 60-minute written test, WS2022)	20
Exercise E1 Complex Impedance Circuit (written test, approx. 15 % of a 60-minute written test, WS2022)	

test, WS2022)	21
Exercise E7 Complex Impedance Circuit (written test, approx. 15 % of a 60-minute written test, WS2022)	24

Exercise E4 Resistance of a Wire by Resistivity (written test, approx. 6 % of a 60-minute written test, WS2022)

A heating element made of solid nichrome wire with a diameter of $d = 0.357 \text{ mm}$ and a length of $l = 3 \text{ m}$ is used for heating elements. The electric power dissipation (= heat flow) of $P = 40 \text{ W}$ is necessary.

Calculate the current I and the voltage U for heating elements.

The Nichrome wire has a resistivity of $\rho = 1.10 \cdot 10^{-6} \text{ } \Omega \cdot \text{m}$.

The heating element is $l = 3 \text{ m}$ long and has a diameter of $d = 0.357 \text{ mm}$.

∴ Calculate the resistance R of the heating element.

Solution

$$\begin{aligned} P &= U \cdot I = R \cdot I^2 \quad \rightarrow \quad I = \\ \sqrt{\frac{P}{R}} &= \sqrt{\frac{40 \text{ W}}{0.33 \text{ } \Omega}} \end{aligned}$$

$$\begin{aligned} R &= \rho \cdot \frac{l}{A} \quad \text{with } A = r^2 \cdot \pi = \\ \frac{1}{4} d^2 \cdot \pi \quad R &= \rho \cdot \frac{l}{\frac{1}{4} d^2 \cdot \pi} \quad \text{and } R = \\ 1.10 \cdot 10^{-6} \text{ } \Omega \cdot \text{m} \cdot \frac{4 \cdot 3 \text{ m}}{(3.57 \cdot 10^{-3} \text{ m})^2 \cdot \pi} \end{aligned}$$

Exercise E1 Resistance of a Wire by Resistivity (written test, approx. 6 % of a 60-minute written test, WS2022)

A heating element made of solid nichrome wire with a diameter of $d = 0.357 \text{ mm}$ and a length of $l = 3 \text{ m}$ is used for heating elements. The electric power dissipation (= heat flow) of $P = 40 \text{ W}$ is necessary.

Calculate the current I and the voltage U for heating elements.

The Nichrome wire has a resistivity of $\rho = 1.10 \cdot 10^{-6} \text{ } \Omega \cdot \text{m}$.

The heating element is $l = 3 \text{ m}$ long and has a diameter of $d = 0.357 \text{ mm}$.

∴ Calculate the resistance R of the heating element.

Solution

$$\begin{aligned} P &= U \cdot I = R \cdot I^2 \quad \rightarrow \quad I = \\ \sqrt{\frac{P}{R}} &= \sqrt{\frac{40 \text{ W}}{0.33 \text{ } \Omega}} \end{aligned}$$

$$\begin{aligned} R &= \rho \cdot \frac{l}{A} \quad \text{with } A = r^2 \cdot \pi = \\ \frac{1}{4} d^2 \cdot \pi \quad R &= \rho \cdot \frac{l}{\frac{1}{4} d^2 \cdot \pi} \quad \text{and } R = \\ 1.10 \cdot 10^{-6} \text{ } \Omega \cdot \text{m} \cdot \frac{4 \cdot 3 \text{ m}}{(3.57 \cdot 10^{-3} \text{ m})^2 \cdot \pi} \end{aligned}$$

Exercise E1 Temperature-dependent Resistance

(written test, approx. 6 % of a 60-minute written test, WS2022)

2. A refrigerator exhibits a temperature coefficient of resistance in its refrigeration system. The circuit has a resistance of $10 \text{ k}\Omega$ at 25°C . Its temperature coefficients are: $\alpha = 0.01 \text{ K}^{-1}$ and $\beta = 71 \cdot 10^{-6} \text{ K}^{-2}$.

Result: The temperature inside the refrigeration system can reach down to -40°C .

Calculate the resistance of the thermal circuit at -40°C .

The power transfer resistor P is a part of the circuit and generates heat. Therefore, a solution is to increase the heat flow up the refrigeration system.

Therefore, with constant U and increasing R the power decreases. Ten times more resistance decreases the heat flow to one-tenth.

$$R = R_0 \cdot (1 + \alpha \cdot \Delta T + \beta \cdot \Delta T^2)$$

$$R = 10 \text{ k}\Omega \cdot \left(1 + 0.01 \text{ K}^{-1} \cdot (-40^\circ\text{C} - 25^\circ\text{C}) + 71 \cdot 10^{-6} \text{ K}^{-2} \cdot (-40^\circ\text{C} - 25^\circ\text{C})^2\right)$$

Exercise E2 Temperature-dependent Resistance

(written test, approx. 6 % of a 60-minute written test, WS2022)

2. A refrigerator exhibits a temperature coefficient of resistance in its refrigeration system. The circuit has a resistance of $10 \text{ k}\Omega$ at 25°C .

Its temperature coefficients are: $\alpha = 0.01 \text{ K}^{-1}$ and $\beta = 71 \cdot 10^{-6} \text{ K}^{-2}$.

Result: The temperature inside the refrigeration system can reach down to -40°C .

Calculate the resistance of the thermal circuit at -40°C .

The power transfer resistor P is a part of the circuit and generates heat. Therefore, a solution is to increase the heat flow up the refrigeration system.

Therefore, with constant U and increasing R the power decreases. Ten times more resistance decreases the heat flow to one-tenth.

$$R = R_0 \cdot (1 + \alpha \cdot \Delta T + \beta \cdot \Delta T^2)$$

$$R = 10 \text{ k}\Omega \cdot \left(1 + 0.01 \text{ K}^{-1} \cdot (-40^\circ\text{C} - 25^\circ\text{C}) + 71 \cdot 10^{-6} \text{ K}^{-2} \cdot (-40^\circ\text{C} - 25^\circ\text{C})^2\right)$$

Exercise E6 Pure Resistor Network Simplification
(written test, approx. 13 % of a 60-minute written test, WS2022)

The following shall be solved at once, $R_2 = R_3 = 100 \Omega$ and the switch shall be open. Calculate the equivalent resistance R_{eq} between A and B .

Solution

$$R_{eq} = 133.8 \Omega$$

Now a wye-delta transformation is necessary.



Since $R_2 = R_3$ and based on the equations for the transformation, the transformed R_Y is given as:

$$R_Y = \frac{R_2 \cdot R_3}{R_2 + R_3} = \frac{100 \cdot 100}{100 + 100} = 50 \Omega$$

The equivalent resistor is given by a parallel configuration of resistors in series:

$$R_{eq} = R_Y + (R_Y + R_1) \parallel (R_Y + R_2) \parallel R_3$$

$$R_{eq} = 50 + (50 + 100) \parallel (50 + 100) \parallel 100$$

$$R_{eq} = 50 + 150 \parallel 150 \parallel 100 = 50 + 75 \parallel 100 = 50 + 41.67 = 91.67 \Omega$$

The switch shall now be open. Calculate the equivalent resistance R_{eq} between A and B .

Solution



The equivalent resistor is given by a parallel configuration of resistors in series:

$$R_{\text{eq}} = (R_2 + R_1 + R_1) \parallel (R_2 + R_2) \parallel (100 \Omega + 200 \Omega + 200 \Omega) \parallel (100 \Omega + 100 \Omega) \parallel (500 \Omega) \parallel (200 \Omega) \parallel (500 \Omega \cdot 200 \Omega) / (500 \Omega + 200 \Omega)$$

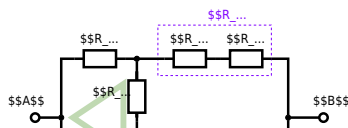
Exercise E3 Pure Resistor Network Simplification (written test, approx. 13 % of a 60-minute written test, WS2022)

The following shall be solved with $R_1 = 200 \Omega$, $R_2 = R_3 = 100 \Omega$ and the source $B = 10 \text{ V}$.
 Result given: $R_{\text{eq}} = 132.8 \Omega$.

Solution

$$R_{\text{eq}} = 132.8 \Omega$$

Now a wye-delta transformation is necessary.

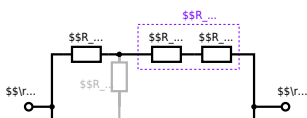


Since $R_2=R_3$ and based on the equations for the transformation, the transformed R_Y is given as:
$$R_Y = \frac{R_2 \cdot R_2}{R_2 + R_2 + R_2} = \frac{(100 \Omega)^2}{3 \cdot 100 \Omega} = \frac{1}{3} \cdot 100 \Omega = 33.33 \Omega$$

The equivalent resistor is given by a parallel configuration of resistors in series:
$$R_{\text{eq}} = R_Y + (R_Y + R_1 + R_1) \parallel (R_Y + R_2) \parallel R_{\text{eq}} = 33.33 \Omega + (33.33 \Omega + 400 \Omega) \parallel (33.33 \Omega + 100 \Omega)$$

1. The switch shall now be open. Calculate the equivalent resistance R_{eq} between A and B.

Solution



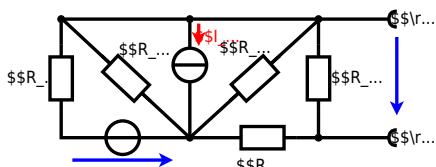
The equivalent resistor is given by a parallel configuration of resistors in series:

$$R_{\text{eq}} = (R_2 + R_1 + R_{-1}) \parallel (R_2 + R_2) \parallel R_{\text{eq}} = (100 \Omega + 200 \Omega + 200 \Omega) \parallel (100 \Omega + 100 \Omega) \parallel R_{\text{eq}} = (500 \Omega) \parallel (200 \Omega) \parallel R_{\text{eq}} = \frac{500 \Omega \cdot 200 \Omega}{500 \Omega + 200 \Omega} \parallel$$

**Exercise E1 Equivalent linear Source
(written test, approx. 14 % of a 60-minute written test, WS2022)**

The circuit in the following has to be simplified.
Result

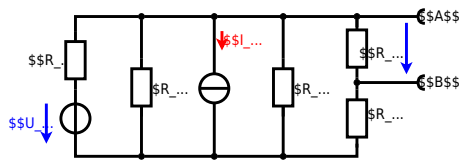
$$U_{\text{s}} = U_{\text{AB}} = 4.5 \text{ V} \quad R_{\text{i}} = R_{\text{AB}} = 6 \Omega$$



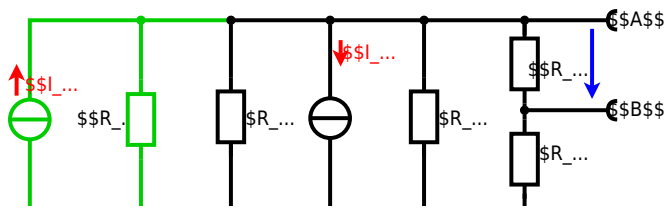
Calculate the internal resistance R_{in} and the source voltage U_{s} of an equivalent linear voltage source on the connectors A and B .
 $R_1=5.0 \Omega$, $U_2=6.0 \text{ V}$, $R_3=10 \Omega$, $I_4=4.2 \text{ A}$,
 $R_5=10 \Omega$, $R_6=7.5 \Omega$, $R_7=15 \Omega$ Use equivalent sources in order to simplify the circuit!

Solution

The best thing is to re-think the wiring like rubber bands and adjust them:



The linear voltage source of U_2 and R_1 can be transformed into a current source $I_2 = \frac{U_2}{R_1}$ and R_1 :



Now a lot of them can be combined. The resistors R_1 , R_3 , R_5 are in parallel, like also I_2 and I_4 :

$$R_{135} = R_1 || R_3 || R_5$$

$$I_{24} = I_2 - I_4$$

The resulting circuit can again be transformed:



Here, the U_{24} is calculated by I_{24} as the following:

$$U_{24} = I_{24} \cdot (R_6 || R_7)$$

$$U_{24} = U_2 \cdot \frac{R_7}{R_6 + R_7 + R_1 || R_3 || R_5} - I_4 \cdot R_1 || R_3 || R_5$$

On the right side of the last circuit, there is a voltage divider given by R_{135} , R_6 , and R_7 .

Therefore the voltage between A and B is given as:

$$U_{AB} = U_{24} \cdot \frac{R_7}{R_6 + R_7 + R_1 || R_3 || R_5} - I_4 \cdot \frac{R_7 \cdot R_1 || R_3 || R_5}{R_6 + R_7 + R_1 || R_3 || R_5}$$

For the internal resistance R_i the ideal voltage source is substituted by its resistance ($=0\Omega$, so a short-circuit):

$$R_{AB} = R_7 || (R_6 + R_1 || R_3 || R_5)$$

with $R_1 || R_3 || R_5 = 5\Omega || 10\Omega || 10\Omega = 5\Omega || 5\Omega = 2.5\Omega$:

$$U_{AB} = \frac{6.0\text{V}}{5.0\Omega} - 4.2\Omega \cdot \frac{15\Omega \cdot 2.5\Omega}{7.5\Omega + 15\Omega + 2.5\Omega}$$

$$R_{AB} = 15\Omega || (7.5\Omega + 2.5\Omega)$$

Exercise E3 Equivalent linear Source (written test, approx. 14 % of a 60-minute written test, WS2022)

The circuit in the following has to be simplified.
Result

$$U_s = U_{AB} = 4.5\text{V} \quad R_i = R_{AB} = 6\Omega$$



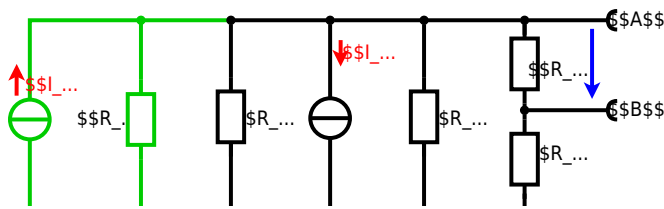
Calculate the internal resistance R_{int} and the source voltage U_s of an equivalent linear voltage source on the connectors A and B .
 $R_1=5.0 \Omega$, $U_2=6.0 \text{ V}$, $R_3= 10 \Omega$, $I_4=4.2 \text{ A}$, $R_5=10 \Omega$, $R_6=7.5 \Omega$, $R_7=15 \Omega$
 Use equivalent sources in order to simplify the circuit!

Solution

The best thing is to re-think the wiring like rubber bands and adjust them:



The linear voltage source of U_2 and R_1 can be transformed into a current source $I_2 = \frac{U_2}{R_1}$ and R_1 :



Now a lot of them can be combined. The resistors R_1 , R_3 , R_5 are in parallel, like also I_2 and I_4 :
$$R_{135} = R_1 || R_3 || R_5$$

$$I_{24} = I_2 - I_4$$
 The resulting circuit can again be transformed:



Here, the U_{24} is calculated by I_{24} as the following:
$$U_{24} = I_{24} \cdot (R_6 || R_7)$$

$$U_{AB} = U_{24} \cdot \frac{R_7}{R_6 + R_7 + R_1 || R_3 || R_5} - I_4 \cdot R_1 || R_3 || R_5$$

On the right side of the last circuit, there is a voltage divider given by R_{135} , R_6 , and R_7 .

Therefore the voltage between A and B is given as:

$$U_{AB} = U_{24} \cdot \frac{R_7}{R_6 + R_7 + R_1 || R_3 || R_5} - (U_{24} \cdot \frac{R_1}{R_1 + R_3 + R_5}) \cdot \frac{R_1 || R_3 || R_5}{R_6 + R_7 + R_1 || R_3 || R_5}$$

For the internal resistance R_i the ideal voltage source is substituted by its resistance ($=0 \Omega$, so a short-circuit):

$$R_{AB} = R_7 || (R_6 + R_1 || R_3 || R_5)$$

with $R_1 || R_3 || R_5 = 5 \Omega || 10 \Omega || 10 \Omega = 5 \Omega || 5 \Omega = 2.5 \Omega$:

$$U_{AB} = \frac{6.0 \text{ V}}{5.0 \Omega} - 4.2 \Omega \cdot \frac{15 \Omega \cdot 2.5 \Omega}{7.5 \Omega + 15 \Omega + 2.5 \Omega} || R_{AB} = 15 \Omega || (7.5 \Omega + 2.5 \Omega)$$

Exercise E5 Charging Capacitors
(written test, approx. 16 % of a 60-minute written test, WS2022)

The circuit below is a fully discharging RC circuit. The capacitor has a capacitance $C = 2 \mu\text{F}$ and is initially at 0 V . The voltage across the capacitor is again 0 V at the moment $t_0 = 0 \text{ s}$ when the switch S_1 is closed. Calculate the voltage $u_c(t_2)$ across the capacitor at $t_2 = 1 \text{ ms}$ after closing the switch.

Result: To solve this, first create an equivalent linear voltage source from U , R_1 , and R_2 .

Solution: The ideal voltage source U is in series with R_1 and R_2 .

$$U_{eq} = U \cdot \frac{R_2}{R_1 + R_2} = 12 \text{ V} \cdot \frac{2 \Omega}{2 \Omega + 2 \Omega} = 6 \text{ V}$$

On an alternative view, one can try to create an equivalent linear voltage source again. Then, the internal resistance is given by substituting the ideal voltage source is again short-circuiting R_2 .



The circuit contains a voltage source $U=12\text{ V}$, a switch S_1 , a resistor of $R_1=20\text{ }\Omega$ and a capacitor of $C=100\text{ }\mu\text{F}$. The switch S_2 to an additional consumer R_2 will be considered to be open for the first task. At the moment $t_0=0\text{ s}$ the switch S_1 is closed, the voltage across the capacitor is $u_c(t_0)=0\text{ V}$.



First do not consider the light bulb - it is not connected to the RC circuit. Calculate the point of time t_1 when $u_c(t_1)=0.5 \cdot U$.

Solution



So, here only R_1 and C gives the time constant: $\tau = R_1 \cdot C$

The following formula describes the time course of $u_c(t)$ which has to be $u_c(t_1)=0.5 \cdot U$:

$$u_c(t) = U \cdot (1 - e^{-t/\tau}) = 0.5 \cdot U$$
 It has to be rearranged to $(1 - e^{-t/\tau}) = 0.5$. An equivalent linear voltage source can be given with U_s , R_1 and R_B as seen in yellow.

Therefore, the voltage of the equivalent linear voltage source is: $U_s = U \cdot \frac{R_B}{R_1 + R_B} = 1/2 \cdot U$. The internal resistance is given by substituting the ideal voltage source with its resistance ($=0\text{ }\Omega$, short-circuit).

$$R_i = R_1 \parallel R_B = 10\text{ }\Omega$$

$$u_c(t_2) = U_s \cdot (1 - e^{-t_2/(R_i \cdot C)}) = \frac{1}{2} \cdot U \cdot (1 - e^{-1\text{ ms}/(10\text{ }\Omega \cdot 100\text{ }\mu\text{F})})$$

Exercise E4 Charging Capacitors
 (written test, approx. 16 % of a 60-minute written test, WS2022)

The circuit (as shown in the figure) consists of a DC voltage source $U=6\text{ V}$, a resistor $R_1=20\text{ }\Omega$, a capacitor $C=20\text{ }\mu\text{F}$ and a light bulb $R_B=10\text{ }\Omega$. The switch S_1 is open. The voltage across the capacitor is again 0 V at the moment $t_0=0\text{ s}$ when the switch S_1 is closed. Calculate the voltage $u_c(t_2)$ across the capacitor at $t_2=1\text{ ms}$ after closing the switch.

Solution To solve this, first create an equivalent linear voltage source from U , R_1 , and R_B .

$$U_s = U \cdot \frac{R_B}{R_1 + R_B} = 2\text{ V}$$

$$R_i = R_1 \parallel R_B = 13.33\text{ }\Omega$$

Solution

The ideal voltage source is $U = 12 \text{ V}$. The internal resistance is $R_1 = 20 \text{ }\Omega$. The voltage across the capacitor is $u_C(t)$. The voltage across the light bulb is $u_B(t)$. The voltage across the resistor R_2 is $u_{R_2}(t)$. The voltage across the capacitor is $u_C(t)$. The voltage across the light bulb is $u_B(t)$. The voltage across the resistor R_2 is $u_{R_2}(t)$.

On an alternative view, one can try to create an equivalent linear voltage source again. Then, the internal resistance is given by substituting the ideal voltage source is again short-circuiting R_2 .

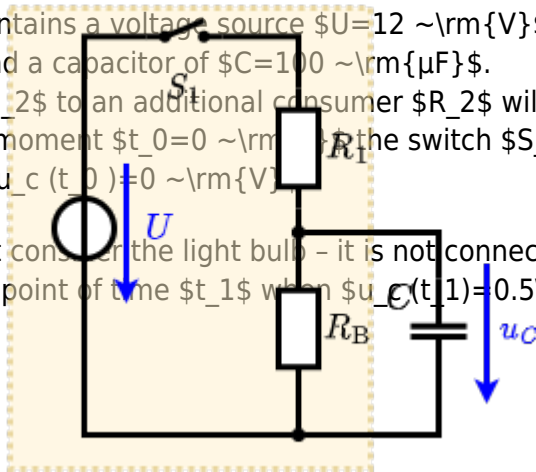


The circuit contains a voltage source $U = 12 \text{ V}$, a switch S_1 , a resistor of $R_1 = 20 \text{ }\Omega$ and a capacitor of $C = 100 \text{ }\mu\text{F}$.

The switch S_2 to an additional consumer R_2 will be considered to be open for the first asks. At the moment $t_0 = 0$ the switch S_1 is closed, the voltage across the capacitor is $u_C(t_0) = 0 \text{ V}$.

First do not consider the light bulb - it is not connected to the RC circuit.

Calculate the point of time t_1 when $u_C(t_1) = 0.5 \cdot U$.



Solution

An equivalent linear voltage source can be given with U , R_1 , and R_B as seen in yellow.

Therefore, the voltage of the equivalent linear voltage source is: $U_s = U \cdot \frac{R_B}{R_1 + R_B} = \frac{1}{2} \cdot U$. The internal resistance is given by substituting the ideal voltage source with its resistance ($R = 0 \text{ }\Omega$, short-circuit). $R_i = R_1 \parallel R_B = 10 \text{ }\Omega$

$$u_C(t_2) = U_s \cdot (1 - e^{-t_2 / (R_i \cdot C)}) = \frac{1}{2} \cdot U \cdot (1 - e^{-t_2 / (10 \text{ }\Omega \cdot 100 \text{ }\mu\text{F})})$$

So, here only R_1 and C gives the time constant: $\tau = R_1 \cdot C$

The following formula describes the time course of $u_C(t)$ which has to be $u_C(t_1) = 0.5 \cdot U$: $u_C(t) = U \cdot (1 - e^{-t/\tau}) = 0.5 \cdot U$. It has to be rearranged to $(1 - e^{-t/\tau}) = 0.5 \implies e^{-t/\tau} = 0.5 \implies t/\tau = \ln(0.5) \implies t = \tau \cdot \ln(0.5) = R_1 \cdot C \cdot \ln(0.5)$

Exercise E2 Analyzing complex Impedances (written test, approx. 14 % of a 60-minute written test, WS2022)

2. Given that the phasor voltage $\underline{u}(t) = 50 \cos(300t - 20^\circ)$ V and the phasor current $\underline{i}(t) = 0.24 \cos(300t + 90^\circ)$ A are both through the components (R and X_L) shall be given.

After analysis, the full bandwidth of the circuit impedance Z can be extracted and the phase angle φ in phase with the voltage $\underline{u}(t) = 0.24 \cos(300t + 90^\circ)$ A shall be given.

Solution
.. Calculation of the physical values of the two components.
Solution
$$R = \frac{U}{I} = \frac{50}{0.24} = 208.33 \Omega$$

Solution

$$\underline{I} = \frac{\underline{U}}{\underline{Z}} \Leftrightarrow \underline{Z} = \frac{\underline{U}}{\underline{I}} = \frac{50 \angle -20^\circ}{0.24 \angle 90^\circ} = 208.33 \angle -110^\circ \Omega$$

The voltage $\underline{u}(t) = 50 \cos(300t - 20^\circ)$ V and the current $\underline{i}(t) = 0.24 \cos(300t + 90^\circ)$ A are both through the components (R and X_L) shall be given.

After analysis, the full bandwidth of the circuit impedance Z can be extracted and the phase angle φ in phase with the voltage $\underline{u}(t) = 0.24 \cos(300t + 90^\circ)$ A shall be given.

Solution
.. Calculation of the physical values of the two components.
Solution
$$R = \frac{U}{I} = \frac{50}{0.24} = 208.33 \Omega$$

Solution

$$\underline{I} = \frac{\underline{U}}{\underline{Z}} \Leftrightarrow \underline{Z} = \frac{\underline{U}}{\underline{I}} = \frac{50 \angle -20^\circ}{0.24 \angle 90^\circ} = 208.33 \angle -110^\circ \Omega$$

The voltage $\underline{u}(t) = 50 \cos(300t - 20^\circ)$ V and the current $\underline{i}(t) = 0.24 \cos(300t + 90^\circ)$ A are both through the components (R and X_L) shall be given.

After analysis, the full bandwidth of the circuit impedance Z can be extracted and the phase angle φ in phase with the voltage $\underline{u}(t) = 0.24 \cos(300t + 90^\circ)$ A shall be given.

Solution
.. Calculation of the physical values of the two components.
Solution
$$R = \frac{U}{I} = \frac{50}{0.24} = 208.33 \Omega$$

Exercise E5 Analyzing complex Impedances (written test, approx. 14 % of a 60-minute written test, WS2022)

2. Given that the phasor voltage $\underline{u}(t) = 50 \cos(300t - 20^\circ)$ V and the phasor current $\underline{i}(t) = 0.24 \cos(300t + 90^\circ)$ A are both through the components (R and X_L) shall be given.

After analysis, the full bandwidth of the circuit impedance Z can be extracted and the phase angle φ in phase with the voltage $\underline{u}(t) = 0.24 \cos(300t + 90^\circ)$ A shall be given.

Solution
.. Calculation of the physical values of the two components.
Solution
$$R = \frac{U}{I} = \frac{50}{0.24} = 208.33 \Omega$$

Solution

$$\underline{I} = \frac{\underline{U}}{\underline{Z}} \Leftrightarrow \underline{Z} = \frac{\underline{U}}{\underline{I}} = \frac{50 \angle -20^\circ}{0.24 \angle 90^\circ} = 208.33 \angle -110^\circ \Omega$$

The voltage $\underline{u}(t) = 50 \cos(300t - 20^\circ)$ V and the current $\underline{i}(t) = 0.24 \cos(300t + 90^\circ)$ A are both through the components (R and X_L) shall be given.

After analysis, the full bandwidth of the circuit impedance Z can be extracted and the phase angle φ in phase with the voltage $\underline{u}(t) = 0.24 \cos(300t + 90^\circ)$ A shall be given.

Solution
.. Calculation of the physical values of the two components.
Solution
$$R = \frac{U}{I} = \frac{50}{0.24} = 208.33 \Omega$$

Resistor R_1 shall have the same absolute value of the impedance as a capacitor $C_1 = 40 \text{ nF}$ at $f_1 = 4 \text{ MHz}$.

Solution

$$R_1 = 1.00 \text{ } \Omega$$

$$R_2 = 10.0 \text{ } \Omega$$

A series circuit means that the current is constant on every component.

The equivalent impedance for R and L combined is given by

$$Z_{RL} = R + j\omega L$$

Parallel circuit means that the voltage is the same on R_2 and C_1

$$Z_{RC} = \frac{R_2 \cdot (-j/\omega C_1)}{R_2 - j/\omega C_1}$$

Since R_2 and C_1 are perpendicular to R_1 , this can be simplified to

$$Z_{RC} = \frac{R_2}{1 + j\omega R_2 C_1}$$

(It has to, since R_3 is perpendicular to $j\omega L$ and $-j/\omega C_1$)

Therefore, the resulting current of the parallel circuit is given as:

$$I_{RC} = I_{R2} + I_{C1}$$

This can be re-arranged to get R_3

$$R_3 = \frac{U}{I_{RC}} = \frac{U}{I_{R2} + I_{C1}} = \frac{U}{\frac{U}{R_2} + \frac{U}{Z_{RC}}}$$

$$R_3 = \frac{1}{\frac{1}{R_2} + \frac{1}{Z_{RC}}}$$

Back to the first formula:

$$R_3 \cdot I_{RC} = X_{C1} \cdot I_{RC}$$

$$R_3 = X_{C1} \cdot \frac{I_{RC}}{I_{RC}}$$

$$R_3 = \frac{1}{2\pi \cdot f \cdot C_1} \cdot \frac{1}{\sqrt{1 + (\omega R_2 C_1)^2}}$$

Exercise E1 Complex Impedance Circuit (written test, approx. 15 % of a 60-minute written test, WS2022)

1. Calculate the current $i(t)$ through the resistor R in the circuit shown in the figure. The voltage source is $u(t) = 3.0 \text{ V} \cdot \sin(2\pi \cdot 15 \text{ kHz} \cdot t)$.

Solution

Result

$$Z = 48.2 \text{ } \Omega \quad Z_C = 19.8 \text{ } \Omega$$

Draw the circuit diagram of the given circuit with all components, voltages, and currents.

$$Z = \frac{U}{I} \quad I = \frac{U}{Z}$$

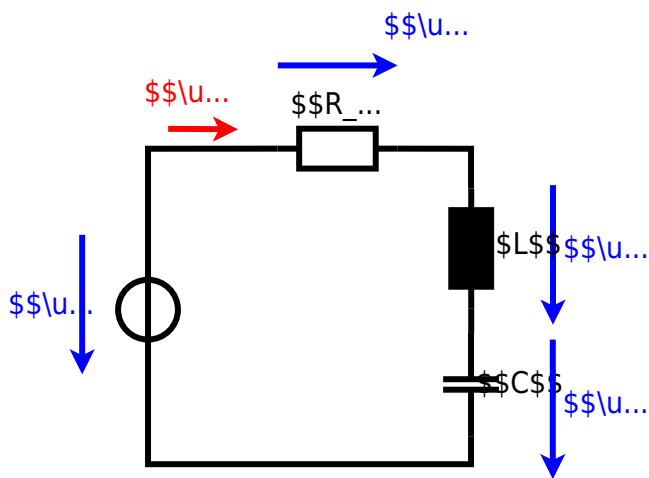
$$Z_C = \frac{1}{2\pi \cdot f \cdot C} = \frac{1}{2\pi \cdot 15 \text{ kHz} \cdot 0.22 \text{ } \mu\text{F}}$$

With $I = \frac{U}{Z}$ and $Z = R + j\omega L - j/\omega C$

$$I = \frac{U}{R + j\omega L - j/\omega C}$$

$$I = \frac{U}{R + j(\omega L - 1/\omega C)}$$

$$I = \frac{U}{\sqrt{R^2 + (\omega L - 1/\omega C)^2}}$$





From:
<https://mexle.te.hs-heilbronn.de/> - **MEXLE Wiki**

Permanent link:
https://mexle.te.hs-heilbronn.de/electrical_engineering_1/ws2022_exam?rev=1680387346

Last update: **2023/04/02 00:15**

