

# dummy\_with\_calculation

## Student Group

First Name	Surname	Matrikel Nr.

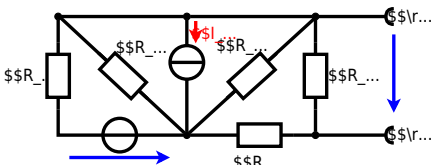
## Table of Contents

Exercise E@numbering@ Power loss and efficiency II (written test, approx. 14 % of a 60-minute written test, WS2022) ..... 2

**Exercise E@numbering@ Power loss and efficiency II**  
**(written test, approx. 14 % of a 60-minute written test, WS2022)**

The circuit in the following has to be simplified.  
 Result

$$\begin{aligned} U_{AB} &= 4.5 \text{ V} \\ R_{AB} &= 6 \text{ } \Omega \end{aligned}$$



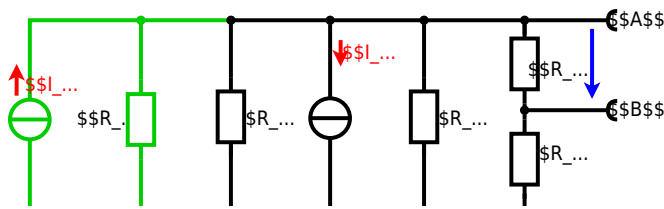
Calculated the internal resistance  $R_i$  and the source voltage  $U_s$  of an equivalent linear voltage source on the connectors  $A$  and  $B$ .  
 $R_1=5.0 \text{ } \Omega$ ,  $U_2=6.0 \text{ V}$ ,  $R_3=10 \text{ } \Omega$ ,  $I_4=4.2 \text{ A}$ ,  $R_5=10 \text{ } \Omega$ ,  $R_6=7.5 \text{ } \Omega$ ,  $R_7=15 \text{ } \Omega$   
 Use equivalent sources in order to simplify the circuit!

Solution

The best thing is to re-think the wiring like rubber bands and adjust them:



The linear voltage source of  $U_2$  and  $R_1$  can be transformed into a current source  $I_2 = \frac{U_2}{R_1}$  and  $R_1$ :



Now a lot of them can be combined. The resistors  $R_1$ ,  $R_3$ ,  $R_5$  are in parallel, like also  $I_2$  and  $I_4$ : 
$$R_{135} = R_1 || R_3 || R_5$$
 
$$I_{24} = I_2 - I_4$$
 The resulting circuit can again be transformed:



Here, the  $U_{24}$  is calculated by  $I_{24}$  as the following: 
$$U_{24} = I_{24} \cdot R_{135}$$

$$U_{24} = R_{135} \cdot I_{24} \quad \&= \left( \frac{U_2}{R_1} - I_4 \right) \cdot R_1 \parallel R_3 \parallel R_5$$

On the right side of the last circuit, there is a voltage divider given by  $R_{135}$ ,  $R_6$ , and  $R_7$ .

Therefore the voltage between  $A$  and  $B$  is given as:

$$U_{AB} = U_{24} \cdot \frac{R_7}{R_6 + R_7 + R_1 \parallel R_3 \parallel R_5} \quad \&= \left( \frac{U_2}{R_1} - I_4 \right) \cdot \frac{R_7 \cdot R_1 \parallel R_3 \parallel R_5}{R_6 + R_7 + R_1 \parallel R_3 \parallel R_5}$$

For the internal resistance  $R_i$  the ideal voltage source is substituted by its resistance ( $=0\Omega$ , so a short-circuit):

$$R_{AB} = R_7 \parallel (R_6 + R_1 \parallel R_3 \parallel R_5)$$

with  $R_1 \parallel R_3 \parallel R_5 = 5\Omega \parallel 10\Omega \parallel 10\Omega = 5\Omega \parallel 5\Omega = 2.5\Omega$ :

$$U_{AB} = \frac{6.0\text{V}}{5.0\Omega} - 4.2\Omega \cdot \frac{15\Omega \cdot 2.5\Omega}{7.5\Omega + 15\Omega + 2.5\Omega} \quad \&= 15\Omega \parallel (7.5\Omega + 2.5\Omega)$$

From:

<https://mexle.te.hs-heilbronn.de/> - MEXLE Wiki

Permanent link:

[https://mexle.te.hs-heilbronn.de/electrical\\_engineering\\_1/dummy\\_with\\_calculation](https://mexle.te.hs-heilbronn.de/electrical_engineering_1/dummy_with_calculation)

Last update: **2023/03/29 16:55**

