

task_tb6pi8dgh0m2e2pw_with_calculation

Student Group

| First Name | Surname | Matrikel Nr. |
|------------|---------|--------------|
| | | |
| | | |
| | | |

Table of Contents

Exercise E4 Charging Capacitors (written test, approx. 16 % of a 60-minute written test, WS2022) 2

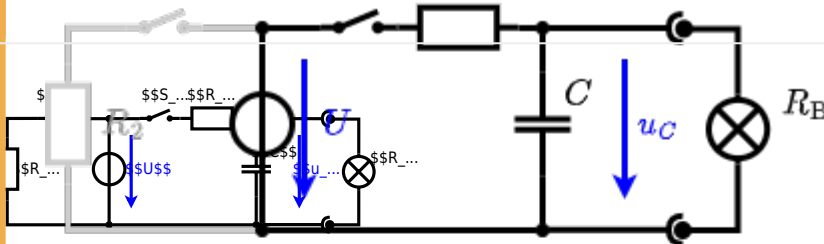
Charging Capacitors, dc network analysis, pure resistor network simplification, delta wye transformation, exam ee1 WS2022

Exercise E4 Charging Capacitors
(written test, approx. 16 % of a 60-minute written test, WS2022)

The circuit (with the real solution) is in the picture of the RC circuit. The capacitor is initially uncharged. At the moment $t_0 = 0 \text{ s}$ when the switch S_1 is closed. Calculate the voltage $u_c(t_2)$ across the capacitor at $t_2 = 1 \text{ ms}$ after closing the switch.

Solution
 To solve this, first create an equivalent linear voltage source from U , R_1 , and R_B .

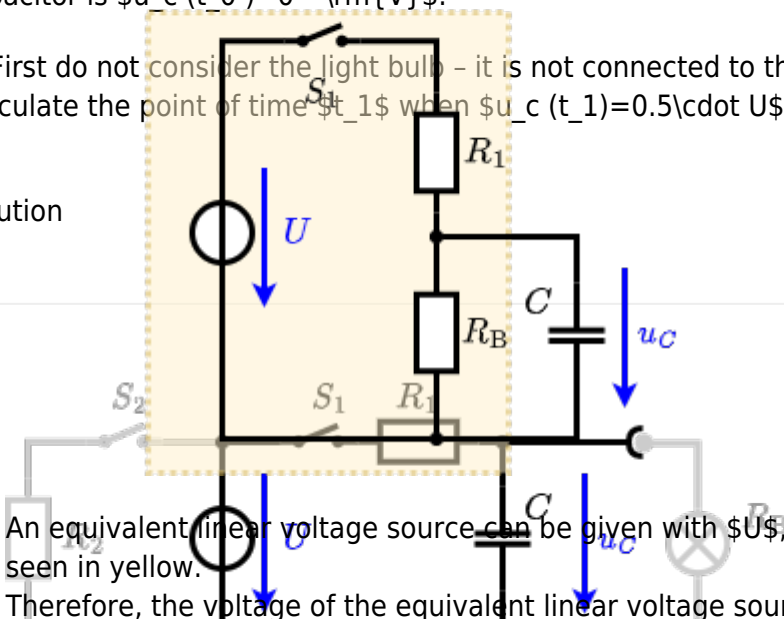
The voltage across the capacitor is again 0 V at the moment $t_0 = 0 \text{ s}$ when the switch S_1 is closed. Calculate the voltage $u_c(t_2)$ across the capacitor at $t_2 = 1 \text{ ms}$ after closing the switch.



The circuit contains a voltage source $U = 12 \text{ V}$, a switch S_1 , a resistor of $R_1 = 20 \text{ }\Omega$ and a capacitor of $C = 100 \text{ }\mu\text{F}$. The switch S_2 to an additional consumer R_2 will be considered to be open for the first asks. At the moment $t_0 = 0 \text{ s}$ the switch S_1 is closed, the voltage across the capacitor is $u_c(t_0) = 0 \text{ V}$.

First do not consider the light bulb - it is not connected to the RC circuit. Calculate the point of time t_1 when $u_c(t_1) = 0.5 \cdot U$.

Solution



An equivalent linear voltage source can be given with U , R_1 , and R_B as seen in yellow.

Therefore, the voltage of the equivalent linear voltage source is: $U_s = U \cdot \frac{R_B}{R_1 + R_B} = \frac{1}{2} \cdot U$. The internal resistance is given by substituting the ideal voltage source with its resistance ($R = 0 \text{ }\Omega$, short-circuit).

$\begin{aligned} R_1 &= R_2 \\ \tau &= RC \end{aligned}$

The following formula describes the current $i(t)$ in a circuit with a resistor R and a capacitor C in series. It has to be rearranged to $(1 - e^{-t/\tau}) = 0.5$ $\Rightarrow t/\tau = \ln(0.5)$ $\Rightarrow t = \tau \cdot \ln(0.5)$ $\Rightarrow t = R \cdot C \cdot \ln(0.5)$

From: <https://mexle.te.hs-heilbronn.de/> - MEXLE Wiki

Permanent link: https://mexle.te.hs-heilbronn.de/electrical_engineering_and_electronics/task_tb6pi8dgh0m2e2pw_with_calculation

Last update: 2023/04/02 00:43

